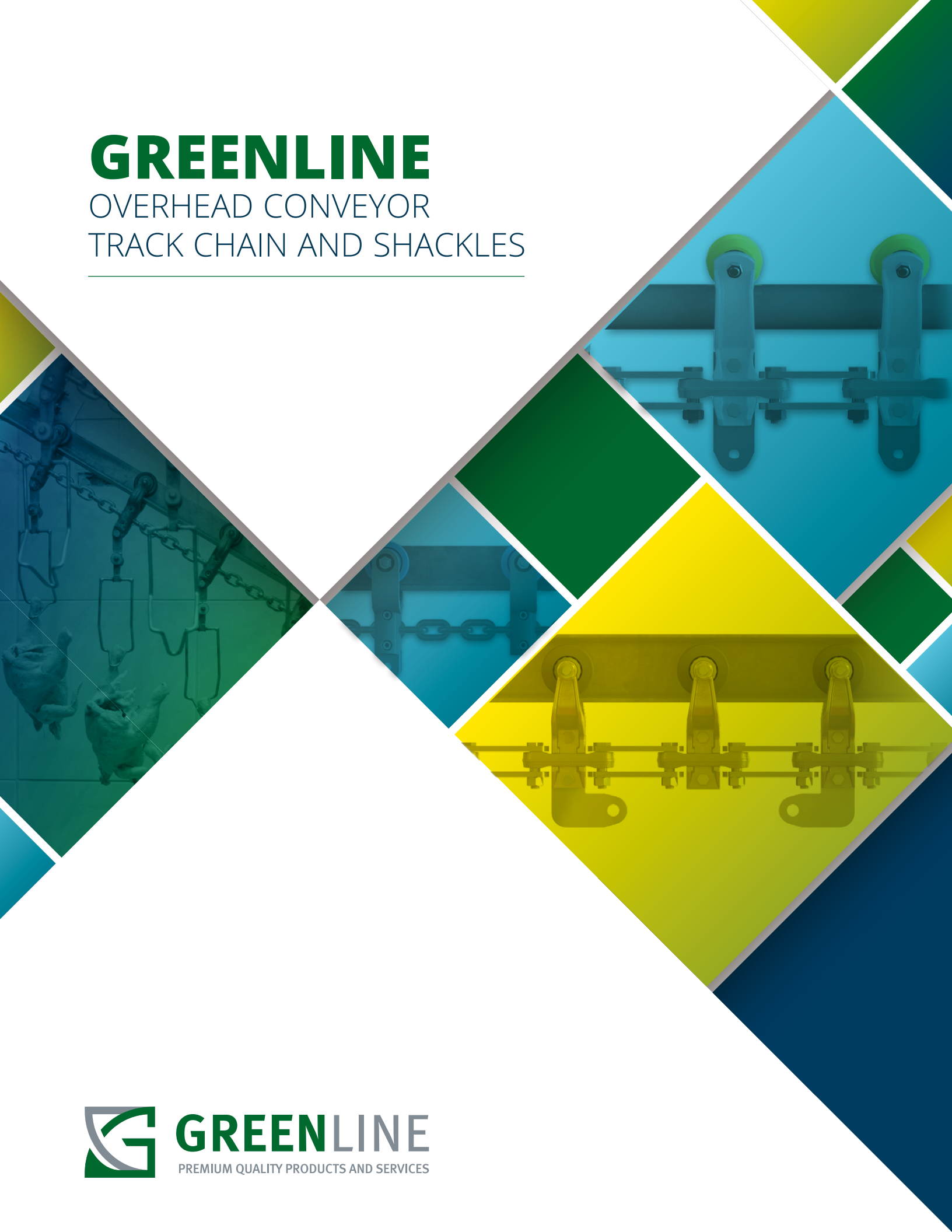


GREENLINE

OVERHEAD CONVEYOR
TRACK CHAIN AND SHACKLES



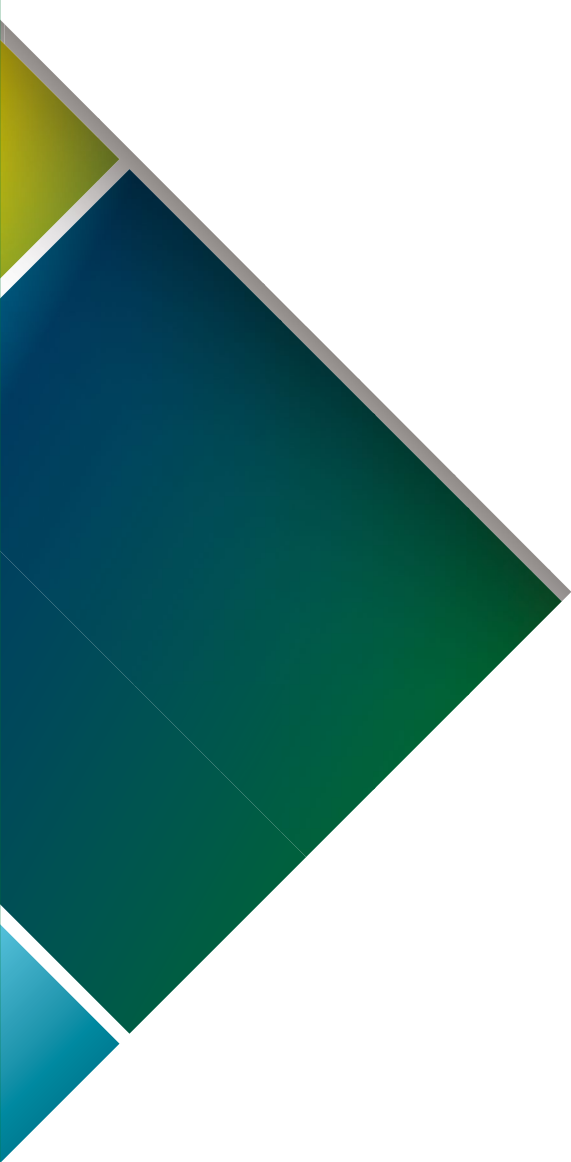
GREENLINE

PREMIUM QUALITY PRODUCTS AND SERVICES



GREENLINE
PREMIUM QUALITY PRODUCTS AND SERVICES

888.774.7307 • greenlineconveyor.com



◆ **Greenline Catalog**

Greenline Overhead Conveyor Track Chain and Shackles

TABLE OF CONTENTS

About Greenline	2-3
------------------------------	-----

Typical 348 chain configurations

Ordering code for complete 348 chain assemblies	4
348 bolted chain with trolleys and pendants on 6" center	5
348 bolted chain with trolleys on 6" and pendants on 12" center	6
348 bolted chain with trolleys on 6" and pendants on 8" center	7
348 bolted chain with trolleys on 12" and pendants on 12" center	8
348 bolted chain with trolleys on 12" and pendants on 6" center	9
348 bolted chain with extended side bars (8" center chain)	10
348 bolted chain with pipe track brackets on 6" and 12" centers	11

348 chains and parts

Chains without trolleys	12
348 trolley halves	13
348 wheels	14
348 pendants and attachments	15-16
348 hardware and bushings	17

X-458 chain and parts

Ordering code for complete X-458 chain assemblies	18
X-458 chains and parts	18-19

Greenline link chain and parts

Linco style chain configurations

Complete chain assemblies	20
Chains and parts	20

Meyn style chain configurations

Complete chain assemblies	21-22
Chains and parts	23-24



Stork style chain configurations

Complete chain assemblies	25-26
Chains and part	26-27

Meyn, Stork and Linco hardware

Hardware for Meyn, Stork and Linco style chains and parts	27
---	----

Overhead I-beam track, corner turns, elevations, takeups and parts

I-beam corner turns with heavy duty 6-bolt bearing assembly, turn wheel and flange	28
Parts to heavy duty 6-bolt turn	28-29
Parts to 5-bolt turn	30
Elevations and straight 3" I-beam (galvanized and stainless steel)	31-32
Elevations and straight 3" I-beam (galvanized)	33
Spring-loaded automatic takeup	33
Sprockets and parts	34
Drive frames	35

T-rail overhead parts (new-generation)

Stainless steel T-rail turns	36
Replacement wheels.....	36
Stainless steel complete T-rail takeups spring-loaded	36
Stainless steel elevations – ups and downs	37

Flex-line overhead parts

Stainless steel flex-line turns	38
Replacement wheel assemblies	38
Stainless steel flex-line takeups	39
Stainless steel flex-line elevations and straight track	39

Replacement shackles

Baader Johnson replacement shackles	40-41
Dapec replacement shackles.....	42
Marel replacement shackles	43
Meyn replacement shackles	44-45

Welcome to Greenline

Headquartered in Charlotte, NC, Greenline has established itself as a valued equipment resource to industry. Our vision is to be the preferred supplier to protein processors globally – delivering premium quality equipment, parts and services, exceeding customer expectations. We are committed to providing cost-effective solutions for your replacement parts needs. We pledge to deliver superior quality products that meet or exceed OEM standards – when and where you need them.



Our Company

Greenline is a leading manufacturer of overhead conveyor chain, with a primary focus on the food industry. Since 1964 we have provided conveyor systems for major industrial users throughout the U.S.

Knowing that new developments are the basis of economic success, we work together with industry leaders and use their specific knowledge to provide our customers with the newest technology and innovative solutions.

We want to be the partner of choice for customers who are looking for high quality products, the support of a knowledgeable and experienced technical service, and competitive pricing.

We take pride that our products and expertise play a part in the smooth and profitable operations of our customers. This is why we always will be **creative, innovative, reliable**. It's all part of our belief that customer and partner business relationships should always be straightforward and based on fair dealing. Openness, mutual trust and respect are at the core of our company culture.



Consulting and Engineering

In addition to offering high quality products, we provide the tools and know-how to enable our customers to achieve the most out of their conveyor system and protect their investment.

Solutions to increase productivity, reduce costs and meet industry regulations are more important than ever in today's challenging industrial environment. Allow us to analyze your conveyor system and track layout, point out critical areas of improvement, and help you increase the lifetime of your conveyor chain. As a result, you will minimize downtime and increase productivity which will lead to a smoother, more profitable operation.

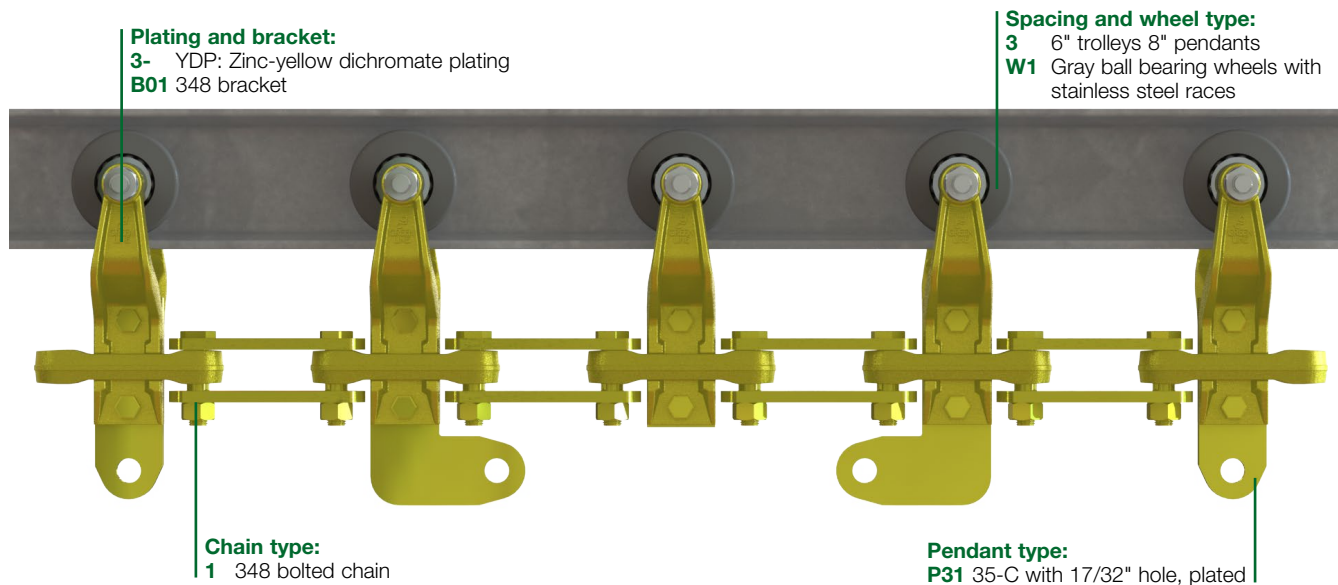
Simply put, we want to be the partner of choice for customers who are looking for high quality products along with premium service.



◆ Ordering code for complete 348 chain assemblies

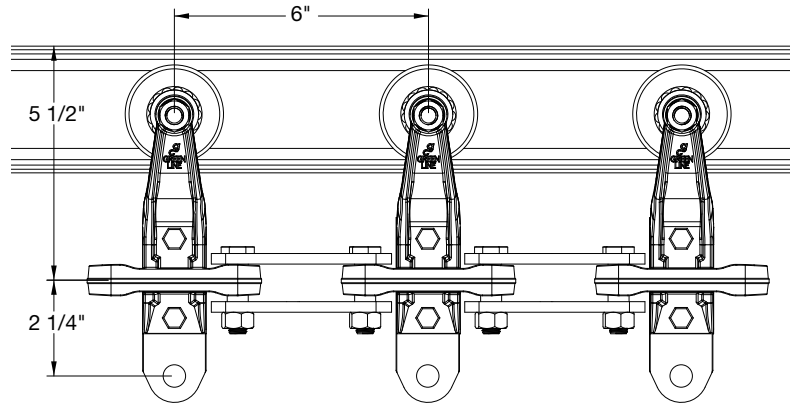
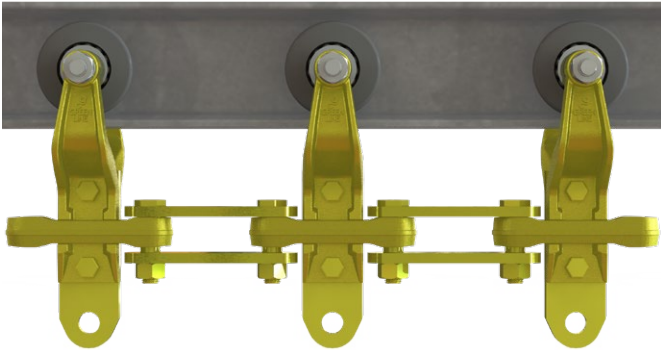
Ordering code

Plating	Chain type	Brackets	Spacing	Wheel type	Pendant type
0- No plating	1 348 bolted chain	B01 348 bracket	1 6" trolleys 6" pendants	W1 Gray ball bearing wheels with stainless steel races	P31 35-C with 17/32" hole, plated
3- YDP: Zinc-yellow dichromate plating	2 348 I-Pin chain	B02 Pipe track bracket	2 6" trolleys 12" pendants	W2 Blue non ball bearing plastic wheel	P32 35-C with 5/16" hole, plated
4- ZNP: Zinc nickel plating	3 348 bolted chain with extended side bar for 8" configurations	B03 37-HF intermediate plate	3 6" trolleys 8" pendants	W3 Gray caged ball bearing wheel	P33 35-C with 3/8" hole, plated
5- Clear zinc plating			4 12" trolleys 12" pendants	W4 Plated ball bearing steel wheel	(For more pendants see list pendants and attachments on page 15/16)
6- Stainless steel			5 12" trolleys 6" pendants	W5 Pipe track wheel	
			6 8" trolleys 8" pendants		
			7 12" trolleys 18" pendants		
			8 6" trolleys 18" pendants		



Greenline 348 Dura-Plate chain consists of drop forged center links, hardened side bars, two way prevailing torque lock nut and precision cold-headed, hardened chain pins. It is available in zinc with yellow dichromate or zinc-nickel plating (pendants, chain and trolley bolts in zinc nickel only).

348 bolted chain with trolleys and pendants on 6" center

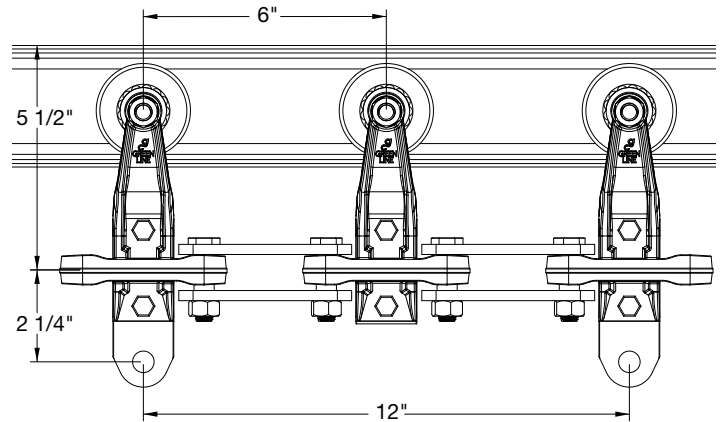
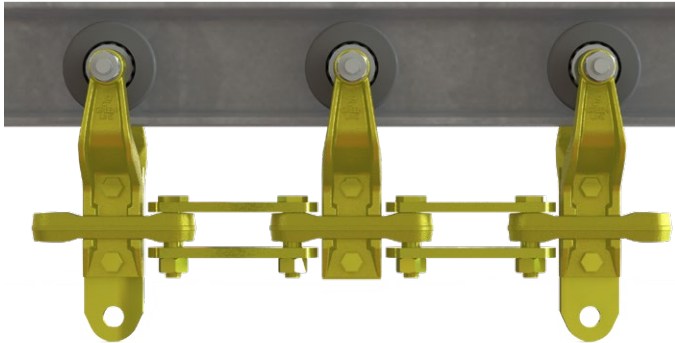


Shown: 348 chain yellow dichromate plating (YDP), gray ball bearing wheels on 6" and 35-C pendants with 17/32" shackle hole on 6" center

Part no.	Chain type	Plating	Wheel type	Pendant type
3-1B011W1P00	348 bolted chain	YDP	trolleys with ball bearing wheels with s.s. races on 6"	customer pendants on 6"
3-1B011W1P31	348 bolted chain	YDP	trolleys with ball bearing wheels with s.s. races on 6"	35-C pendants with 17/32" shackle hole on 6" center
3-1B011W1P32	348 bolted chain	YDP	trolleys with ball bearing wheels with s.s. races on 6"	35-C pendants with 5/16" shackle hole on 6" center
3-1B011W2P31	348 bolted chain	YDP	trolleys with blue plastic non ball bearing wheels on 6"	35-C pendants with 17/32" shackle hole on 6" center
3-1B011W2P32	348 bolted chain	YDP	trolleys with blue plastic non ball bearing wheels on 6"	35-C pendants with 5/16" shackle hole on 6" center
3-1B011W3P31	348 bolted chain	YDP	trolleys with gray caged ball bearing wheels on 6"	35-C pendants with 17/32" shackle hole on 6" center
3-1B011W3P32	348 bolted chain	YDP	trolleys with gray caged ball bearing wheels on 6"	35-C pendants with 5/16" shackle hole on 6" center
3-1B011W4P31	348 bolted chain	YDP	trolleys with plated sealed ball bearing steel wheels on 6"	35-C pendants with 17/32" shackle hole on 6" center
3-1B011W4P32	348 bolted chain	YDP	trolleys with plated sealed ball bearing steel wheels on 6"	35-C pendants with 5/16" shackle hole on 6" center
3-2B011W1P31	348 I-Pin chain	YDP	trolleys with ball bearing wheels with s.s. races on 6"	35-C pendants with 17/32" shackle hole on 6" center
3-2B011W1P32	348 I-Pin chain	YDP	trolleys with ball bearing wheels with s.s. races on 6"	35-C pendants with 5/16" shackle hole on 6" center
3-2B011W2P31	348 I-Pin chain	YDP	trolleys with ball bearing wheels with s.s. races on 6"	35-C pendants with 17/32" shackle hole on 6" center
3-2B011W2P32	348 I-Pin chain	YDP	trolleys with blue plastic non ball bearing wheels on 6"	35-C pendants with 5/16" shackle hole on 6" center
3-2B011W3P31	348 I-Pin chain	YDP	trolleys with gray caged ball bearing wheels on 6"	35-C pendants with 17/32" shackle hole on 6" center
3-2B011W3P32	348 I-Pin chain	YDP	trolleys with gray caged ball bearing wheels on 6"	35-C pendants with 5/16" shackle hole on 6" center
3-2B011W4P31	348 I-Pin chain	YDP	trolleys with plated sealed ball bearing steel wheels on 6"	35-C pendants with 17/32" shackle hole on 6" center
3-2B011W4P32	348 I-Pin chain	YDP	trolleys with plated sealed ball bearing steel wheels on 6"	35-C pendants with 5/16" shackle hole on 6" center
4-1B011W1P01	348 bolted chain	ZNP	trolleys with ball bearing wheels with s.s. races on 6"	35-C pendants with 17/32" shackle hole on 6" center
4-1B011W1P02	348 bolted chain	ZNP	trolleys with ball bearing wheels with s.s. races on 6"	35-C pendants with 5/16" shackle hole on 6" center
4-1B011W2P01	348 bolted chain	ZNP	trolleys with blue plastic non ball bearing wheels on 6"	35-C pendants with 17/32" shackle hole on 6" center
4-1B011W2P02	348 bolted chain	ZNP	trolleys with blue plastic non ball bearing wheels on 6"	35-C pendants with 5/16" shackle hole on 6" center
4-1B011W3P01	348 bolted chain	ZNP	trolleys with gray caged ball bearing wheels on 6"	35-C pendants with 17/32" shackle hole on 6" center
4-1B011W3P02	348 bolted chain	ZNP	trolleys with gray caged ball bearing wheels on 6"	35-C pendants with 5/16" shackle hole on 6" center
4-1B011W4P01	348 bolted chain	ZNP	trolleys with plated sealed ball bearing steel wheels on 6"	35-C pendants with 17/32" shackle hole on 6" center
4-1B011W4P02	348 bolted chain	ZNP	trolleys with plated sealed ball bearing steel wheels on 6"	35-C pendants with 5/16" shackle hole on 6" center

◆ Typical 348 chain configurations

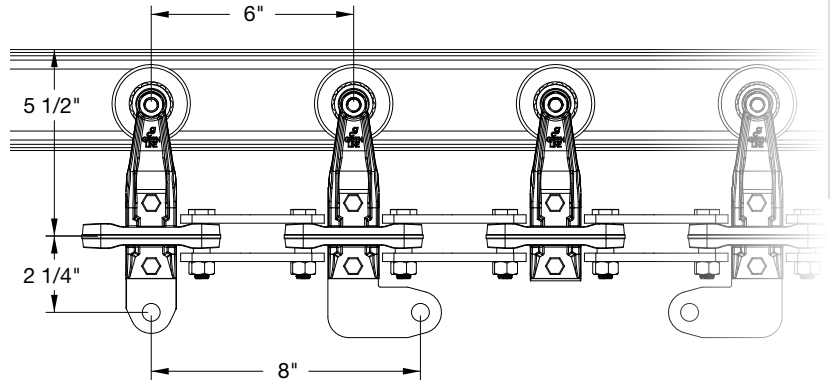
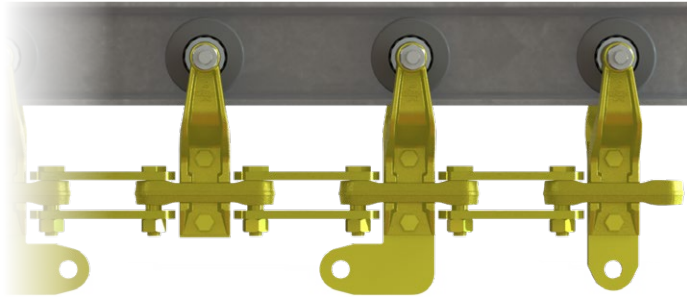
348 bolted chain with trolleys on 6" and pendants on 12" center



Shown: 348 chain yellow dichromate plating (YDP), gray ball bearing wheels on 6" and 35-C pendants with 17/32" shackle hole on 12" center

Part no.	Chain type	Plating	Wheel type	Pendant type
3-1B012W1P31	348 bolted chain	YDP	trolleys with ball bearing wheels with s.s. races on 6"	35-C pendants with 17/32" shackle hole on 12" center
3-1B012W1P32	348 bolted chain	YDP	trolleys with ball bearing wheels with s.s. races on 6"	35-C pendants with 5/16" shackle hole on 12" center
3-1B012W2P31	348 bolted chain	YDP	trolleys with blue plastic non ball bearing wheels on 6"	35-C pendants with 17/32" shackle hole on 12" center
3-1B012W2P32	348 bolted chain	YDP	trolleys with blue plastic non ball bearing wheels on 6"	35-C pendants with 5/16" shackle hole on 12" center
3-1B012W3P31	348 bolted chain	YDP	trolleys with gray caged ball bearing wheels on 6"	35-C pendants with 17/32" shackle hole on 12" center
3-1B012W3P32	348 bolted chain	YDP	trolleys with gray caged ball bearing wheels on 6"	35-C pendants with 5/16" shackle hole on 12" center
3-1B012W4P31	348 bolted chain	YDP	trolleys with plated sealed ball bearing steel wheels on 6"	35-C pendants with 17/32" shackle hole on 12" center
3-1B012W4P32	348 bolted chain	YDP	trolleys with plated sealed ball bearing steel wheels on 6"	35-C pendants with 5/16" shackle hole on 12" center
3-2B012W1P31	348 I-Pin chain	YDP	trolleys with ball bearing wheels with s.s. races on 6"	35-C pendants with 17/32" shackle hole on 12" center
3-2B012W1P32	348 I-Pin chain	YDP	rolleys with ball bearing wheels with s.s. races on 6"	35-C pendants with 5/16" shackle hole on 12" center
3-2B012W2P31	348 I-Pin chain	YDP	rolleys with ball bearing wheels with s.s. races on 6"	35-C pendants with 17/32" shackle hole on 12" center
3-2B012W2P32	348 I-Pin chain	YDP	trolleys with blue plastic non ball bearing wheels on 6"	35-C pendants with 5/16" shackle hole on 12" center
3-2B012W3P31	348 I-Pin chain	YDP	trolleys with gray caged ball bearing wheels on 6"	35-C pendants with 17/32" shackle hole on 12" center
3-2B012W3P32	348 I-Pin chain	YDP	trolleys with gray caged ball bearing wheels on 6"	35-C pendants with 5/16" shackle hole on 12" center
3-2B012W4P31	348 I-Pin chain	YDP	trolleys with plated sealed ball bearing steel wheels on 6"	35-C pendants with 17/32" shackle hole on 12" center
3-2B012W4P32	348 I-Pin chain	YDP	trolleys with plated sealed ball bearing steel wheels on 6"	35-C pendants with 5/16" shackle hole on 12" center
4-1B012W1P01	348 bolted chain	ZNP	trolleys with ball bearing wheels with s.s. races on 6"	35-C pendants with 17/32" shackle hole on 12" center
4-1B012W1P02	348 bolted chain	ZNP	trolleys with ball bearing wheels with s.s. races on 6"	35-C pendants with 5/16" shackle hole on 12" center
4-1B012W2P01	348 bolted chain	ZNP	trolleys with blue plastic non ball bearing wheels on 6"	35-C pendants with 17/32" shackle hole on 12" center
4-1B012W2P02	348 bolted chain	ZNP	trolleys with blue plastic non ball bearing wheels on 6"	35-C pendants with 5/16" shackle hole on 12" center
4-1B012W3P01	348 bolted chain	ZNP	trolleys with gray caged ball bearing wheels on 6"	35-C pendants with 17/32" shackle hole on 12" center
4-1B012W3P02	348 bolted chain	ZNP	trolleys with gray caged ball bearing wheels on 6"	35-C pendants with 5/16" shackle hole on 12" center
4-1B012W4P01	348 bolted chain	ZNP	trolleys with plated sealed ball bearing steel wheels on 6"	35-C pendants with 17/32" shackle hole on 12" center
4-1B012W4P02	348 bolted chain	ZNP	trolleys with plated sealed ball bearing steel wheels on 6"	35-C pendants with 5/16" shackle hole on 12" center

348 bolted chain with trolleys on 6" and pendants on 8" center



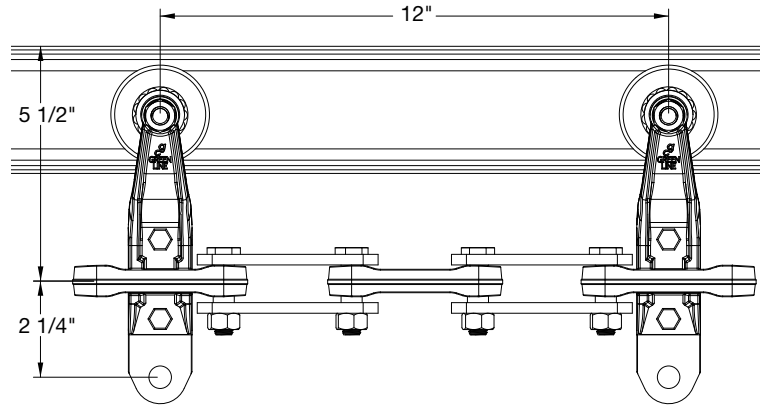
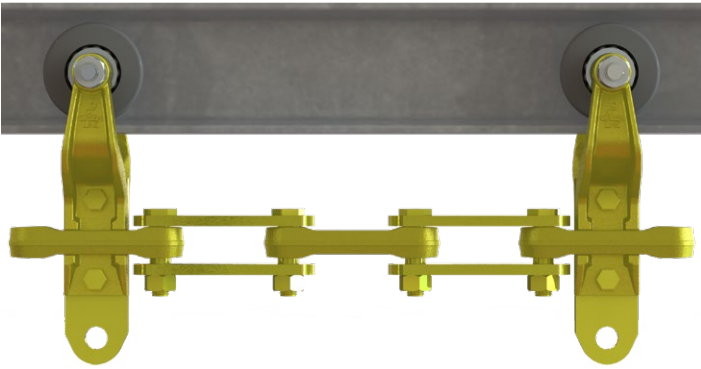
348 chain configurations

Shown: 348 chain yellow dichromate plating (YDP), gray ball bearing wheels on 6" and 35-C pendants with 17/32" shackle hole on 8" center

Part no.	Chain type	Plating	Wheel type	Pendant type
3-1B013W1P31	348 bolted chain	YDP	trolleys with ball bearing wheels with s.s. races on 6"	35-C pendants with 17/32" shackle hole on 8" center
3-1B013W1P32	348 bolted chain	YDP	trolleys with ball bearing wheels with s.s. races on 6"	35-C pendants with 5/16" shackle hole on 8" center
3-1B013W2P31	348 bolted chain	YDP	trolleys with blue plastic non ball bearing wheels on 6"	35-C pendants with 17/32" shackle hole on 8" center
3-1B013W2P32	348 bolted chain	YDP	trolleys with blue plastic non ball bearing wheels on 6"	35-C pendants with 5/16" shackle hole on 8" center
3-1B013W3P31	348 bolted chain	YDP	trolleys with gray caged ball bearing wheels on 6"	35-C pendants with 17/32" shackle hole on 8" center
3-1B013W3P32	348 bolted chain	YDP	trolleys with gray caged ball bearing wheels on 6"	35-C pendants with 5/16" shackle hole on 8" center
3-1B013W4P31	348 bolted chain	YDP	trolleys with plated sealed ball bearing steel wheels on 6"	35-C pendants with 17/32" shackle hole on 8" center
3-1B013W4P32	348 bolted chain	YDP	trolleys with plated sealed ball bearing steel wheels on 6"	35-C pendants with 5/16" shackle hole on 8" center
3-2B013W1P31	348 I-Pin chain	YDP	trolleys with ball bearing wheels with s.s. races on 6"	35-C pendants with 17/32" shackle hole on 8" center
3-2B013W1P32	348 I-Pin chain	YDP	trolleys with ball bearing wheels with s.s. races on 6"	35-C pendants with 5/16" shackle hole on 8" center
3-2B013W2P31	348 I-Pin chain	YDP	trolleys with blue plastic non ball bearing wheels on 6"	35-C pendants with 17/32" shackle hole on 8" center
3-2B013W2P32	348 I-Pin chain	YDP	trolleys with blue plastic non ball bearing wheels on 6"	35-C pendants with 5/16" shackle hole on 8" center
3-2B013W3P31	348 I-Pin chain	YDP	trolleys with gray caged ball bearing wheels on 6"	35-C pendants with 17/32" shackle hole on 8" center
3-2B013W3P32	348 I-Pin chain	YDP	trolleys with gray caged ball bearing wheels on 6"	35-C pendants with 5/16" shackle hole on 8" center
3-2B013W4P31	348 I-Pin chain	YDP	trolleys with plated sealed ball bearing steel wheels on 6"	35-C pendants with 17/32" shackle hole on 8" center
3-2B013W4P32	348 I-Pin chain	YDP	trolleys with plated sealed ball bearing steel wheels on 6"	35-C pendants with 5/16" shackle hole on 8" center
4-1B013W1P01	348 bolted chain	ZNP	trolleys with ball bearing wheels with s.s. races on 6"	35-C pendants with 17/32" shackle hole on 8" center
4-1B013W1P02	348 bolted chain	ZNP	trolleys with ball bearing wheels with s.s. races on 6"	35-C pendants with 5/16" shackle hole on 8" center
4-1B013W2P01	348 bolted chain	ZNP	trolleys with blue plastic non ball bearing wheels on 6"	35-C pendants with 17/32" shackle hole on 8" center
4-1B013W2P02	348 bolted chain	ZNP	trolleys with blue plastic non ball bearing wheels on 6"	35-C pendants with 5/16" shackle hole on 8" center
4-1B013W3P01	348 bolted chain	ZNP	trolleys with gray caged ball bearing wheels on 6"	35-C pendants with 17/32" shackle hole on 8" center
4-1B013W3P02	348 bolted chain	ZNP	trolleys with gray caged ball bearing wheels on 6"	35-C pendants with 5/16" shackle hole on 8" center
4-1B013W4P01	348 bolted chain	ZNP	trolleys with plated sealed ball bearing steel wheels on 6"	35-C pendants with 17/32" shackle hole on 8" center
4-1B013W4P02	348 bolted chain	ZNP	trolleys with plated sealed ball bearing steel wheels on 6"	35-C pendants with 5/16" shackle hole on 8" center

◆ Typical 348 chain configurations

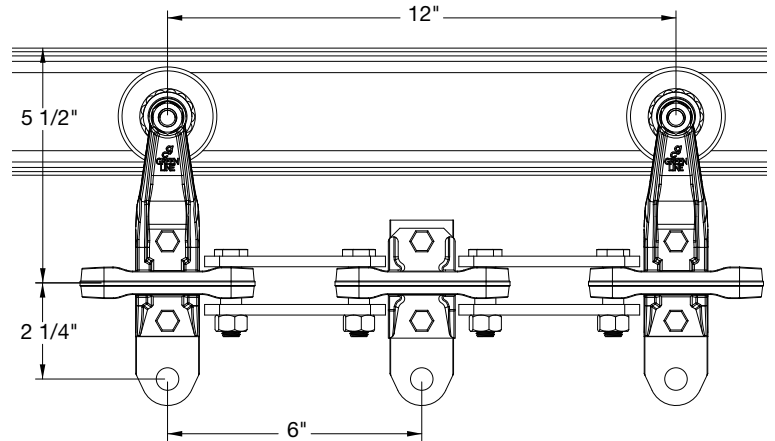
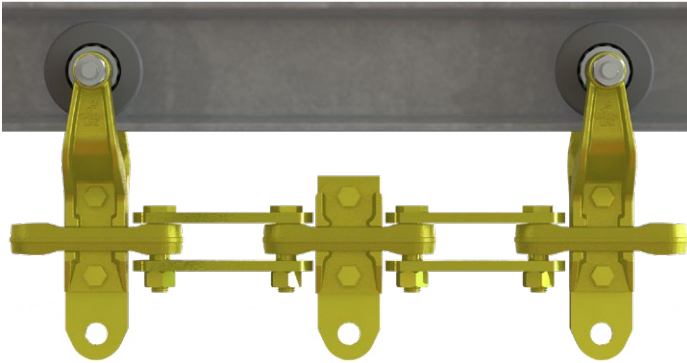
348 bolted chain with trolleys on 12" and pendants on 12" center



Shown: 348 chain yellow dichromate plating (YDP), gray ball bearing wheels on 12" and 35-C pendants with 17/32" shackle hole on 12" center

Part no.	Chain type	Plating	Wheel type	Pendant type
3-1B014W1P31	348 bolted chain	YDP	trolleys with ball bearing wheels with s.s. races on 12"	35-C pendants with 17/32" shackle hole on 12" center
3-1B014W1P32	348 bolted chain	YDP	trolleys with ball bearing wheels with s.s. races on 12"	35-C pendants with 5/16" shackle hole on 12" center
3-1B014W2P31	348 bolted chain	YDP	trolleys with blue plastic non ball bearing wheels on 12"	35-C pendants with 17/32" shackle hole on 12" center
3-1B014W2P32	348 bolted chain	YDP	trolleys with blue plastic non ball bearing wheels on 12"	35-C pendants with 5/16" shackle hole on 12" center
3-1B014W3P31	348 bolted chain	YDP	trolleys with gray caged ball bearing wheels on 12"	35-C pendants with 17/32" shackle hole on 12" center
3-1B014W3P32	348 bolted chain	YDP	trolleys with gray caged ball bearing wheels on 12"	35-C pendants with 5/16" shackle hole on 12" center
3-1B014W4P31	348 bolted chain	YDP	trolleys with plated sealed ball bearing steel wheels on 12"	35-C pendants with 17/32" shackle hole on 12" center
3-1B014W4P32	348 bolted chain	YDP	trolleys with plated sealed ball bearing steel wheels on 12"	35-C pendants with 5/16" shackle hole on 12" center
3-2B014W1P31	348 I-Pin chain	YDP	trolleys with ball bearing wheels with s.s. races on 12"	35-C pendants with 17/32" shackle hole on 12" center
3-2B014W1P32	348 I-Pin chain	YDP	trolleys with ball bearing wheels with s.s. races on 12"	35-C pendants with 5/16" shackle hole on 12" center
3-2B014W2P31	348 I-Pin chain	YDP	trolleys with blue plastic non ball bearing wheels on 12"	35-C pendants with 17/32" shackle hole on 12" center
3-2B014W2P32	348 I-Pin chain	YDP	trolleys with blue plastic non ball bearing wheels on 12"	35-C pendants with 5/16" shackle hole on 12" center
3-2B014W3P31	348 I-Pin chain	YDP	trolleys with gray caged ball bearing wheels on 12"	35-C pendants with 17/32" shackle hole on 12" center
3-2B014W3P02	348 I-Pin chain	YDP	trolleys with gray caged ball bearing wheels on 12"	35-C pendants with 5/16" shackle hole on 12" center
3-2B014W4P31	348 I-Pin chain	YDP	trolleys with plated sealed ball bearing steel wheels on 12"	35-C pendants with 17/32" shackle hole on 12" center
3-2B014W4P32	348 I-Pin chain	YDP	trolleys with plated sealed ball bearing steel wheels on 12"	35-C pendants with 5/16" shackle hole on 12" center
4-1B014W1P01	348 bolted chain	ZNP	trolleys with ball bearing wheels with s.s. races on 12"	35-C pendants with 17/32" shackle hole on 12" center
4-1B014W1P02	348 bolted chain	ZNP	trolleys with ball bearing wheels with s.s. races on 12"	35-C pendants with 5/16" shackle hole on 12" center
4-1B014W2P01	348 bolted chain	ZNP	trolleys with blue plastic non ball bearing wheels on 12"	35-C pendants with 17/32" shackle hole on 12" center
4-1B014W2P02	348 bolted chain	ZNP	trolleys with blue plastic non ball bearing wheels on 12"	35-C pendants with 5/16" shackle hole on 12" center
4-1B014W3P01	348 bolted chain	ZNP	trolleys with gray caged ball bearing wheels on 12"	35-C pendants with 17/32" shackle hole on 12" center
4-1B014W3P02	348 bolted chain	ZNP	trolleys with gray caged ball bearing wheels on 12"	35-C pendants with 5/16" shackle hole on 12" center
4-1B014W4P01	348 bolted chain	ZNP	trolleys with plated sealed ball bearing steel wheels on 12"	35-C pendants with 17/32" shackle hole on 12" center
4-1B014W4P02	348 bolted chain	ZNP	trolleys with plated sealed ball bearing steel wheels on 12"	35-C pendants with 5/16" shackle hole on 12" center

348 bolted chain with trolleys on 12" and pendants on 6" center

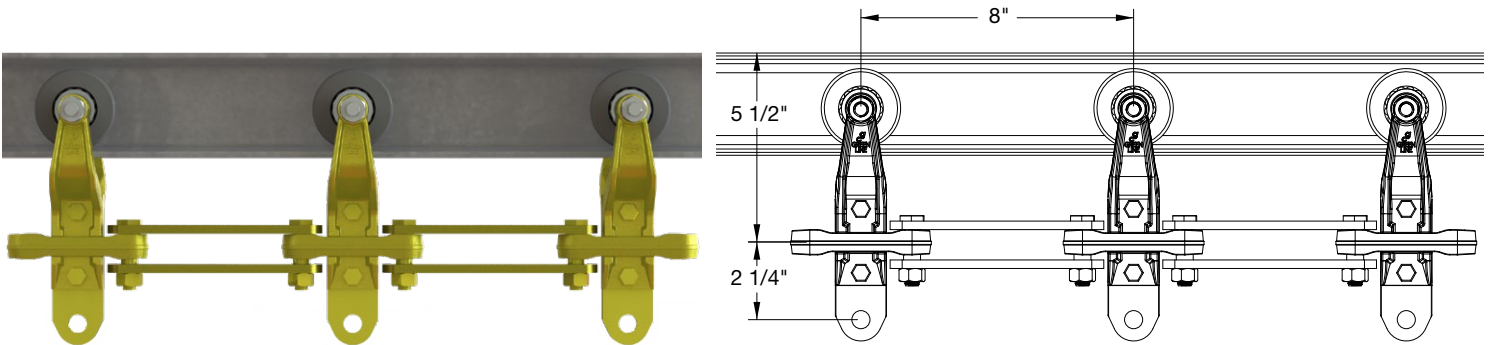


Shown: 348 chain yellow dichromate plating (YDP), gray ball bearing wheels on 12" and 35-C pendants with 17/32" shackle hole on 6" center

Part no.	Chain type	Plating	Wheel type	Pendant type
3-1B015W1P31	348 bolted chain	YDP	trolleys with ball bearing wheels with s.s. races on 12"	35-C pendants with 17/32" shackle hole on 6" center
3-1B015W1P32	348 bolted chain	YDP	trolleys with ball bearing wheels with s.s. races on 12"	35-C pendants with 5/16" shackle hole on 6" center
3-1B015W2P31	348 bolted chain	YDP	trolleys with blue plastic non ball bearing wheels on 12"	35-C pendants with 17/32" shackle hole on 6" center
3-1B015W2P32	348 bolted chain	YDP	trolleys with blue plastic non ball bearing wheels on 12"	35-C pendants with 5/16" shackle hole on 6" center
3-1B015W3P31	348 bolted chain	YDP	trolleys with gray caged ball bearing wheels on 12"	35-C pendants with 17/32" shackle hole on 6" center
3-1B015W3P32	348 bolted chain	YDP	trolleys with gray caged ball bearing wheels on 12"	35-C pendants with 5/16" shackle hole on 6" center
3-1B015W4P31	348 bolted chain	YDP	trolleys with plated sealed ball bearing steel wheels on 12"	35-C pendants with 17/32" shackle hole on 6" center
3-1B015W4P32	348 bolted chain	YDP	trolleys with plated sealed ball bearing steel wheels on 12"	35-C pendants with 5/16" shackle hole on 6" center
3-2B015W1P31	348 I-Pin chain	YDP	trolleys with ball bearing wheels with s.s. races on 12"	35-C pendants with 17/32" shackle hole on 6" center
3-2B015W1P32	348 I-Pin chain	YDP	trolleys with ball bearing wheels with s.s. races on 12"	35-C pendants with 5/16" shackle hole on 6" center
3-2B015W2P31	348 I-Pin chain	YDP	trolleys with blue plastic non ball bearing wheels on 12"	35-C pendants with 17/32" shackle hole on 6" center
3-2B015W2P32	348 I-Pin chain	YDP	trolleys with blue plastic non ball bearing wheels on 12"	35-C pendants with 5/16" shackle hole on 6" center
3-2B015W3P31	348 I-Pin chain	YDP	trolleys with gray caged ball bearing wheels on 12"	35-C pendants with 17/32" shackle hole on 6" center
3-2B015W3P32	348 I-Pin chain	YDP	trolleys with gray caged ball bearing wheels on 12"	35-C pendants with 5/16" shackle hole on 6" center
3-2B015W4P31	348 I-Pin chain	YDP	trolleys with plated sealed ball bearing steel wheels on 12"	35-C pendants with 17/32" shackle hole on 6" center
3-2B015W4P32	348 I-Pin chain	YDP	trolleys with plated sealed ball bearing steel wheels on 12"	35-C pendants with 5/16" shackle hole on 6" center
3-2B015W4P32	348 I-Pin chain	YDP	trolleys with plated sealed ball bearing steel wheels on 12"	35-C pendants with 17/32" shackle hole on 6" center
3-2B015W4P32	348 I-Pin chain	YDP	trolleys with plated sealed ball bearing steel wheels on 12"	35-C pendants with 5/16" shackle hole on 6" center
4-1B015W1P01	348 bolted chain	ZNP	trolleys with ball bearing wheels with s.s. races on 12"	35-C pendants with 17/32" shackle hole on 6" center
4-1B015W1P02	348 bolted chain	ZNP	trolleys with ball bearing wheels with s.s. races on 12"	35-C pendants with 5/16" shackle hole on 6" center
4-1B015W2P01	348 bolted chain	ZNP	trolleys with blue plastic non ball bearing wheels on 12"	35-C pendants with 17/32" shackle hole on 6" center
4-1B015W2P02	348 bolted chain	ZNP	trolleys with blue plastic non ball bearing wheels on 12"	35-C pendants with 5/16" shackle hole on 6" center
4-1B015W3P01	348 bolted chain	ZNP	trolleys with gray caged ball bearing wheels on 12"	35-C pendants with 17/32" shackle hole on 6" center
4-1B015W3P02	348 bolted chain	ZNP	trolleys with gray caged ball bearing wheels on 12"	35-C pendants with 5/16" shackle hole on 6" center
4-1B015W4P01	348 bolted chain	ZNP	trolleys with plated sealed ball bearing steel wheels on 12"	35-C pendants with 17/32" shackle hole on 6" center
4-1B015W4P02	348 bolted chain	ZNP	trolleys with plated sealed ball bearing steel wheels on 12"	35-C pendants with 5/16" shackle hole on 6" center

◆ Typical 348 chain configurations

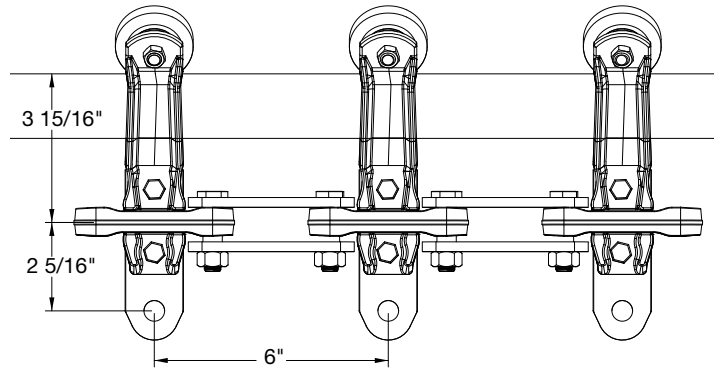
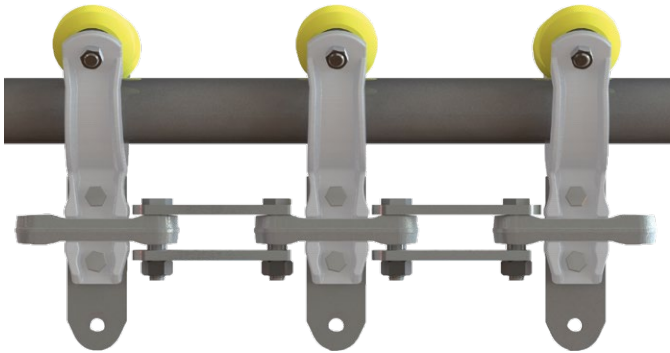
348 chain with extended side bars (8" center chain)



Shown: 348 chain yellow dichromate plating (YDP), gray ball bearing wheels on 8" and 35-C pendants with 17/32" shackle hole on 8" center

Part no.	Chain type	Plating	Wheel type	Pendant type
3-3B016W1P31	348 bolted chain	YDP	trolleys with ball bearing wheels with s.s. races on 8"	35-C pendants with 17/32" shackle hole on 8" center
3-3B016W1P32	348 bolted chain	YDP	trolleys with ball bearing wheels with s.s. races on 8"	35-C pendants with 5/16" shackle hole on 8" center
3-3B016W2P31	348 bolted chain	YDP	trolleys with blue plastic non ball bearing wheels on 8"	35-C pendants with 17/32" shackle hole on 8" center
3-3B016W2P32	348 bolted chain	YDP	trolleys with blue plastic non ball bearing wheels on 8"	35-C pendants with 5/16" shackle hole on 8" center
3-3B016W3P31	348 bolted chain	YDP	trolleys with gray caged ball bearing wheels on 8"	35-C pendants with 17/32" shackle hole on 8" center
3-3B016W3P32	348 bolted chain	YDP	trolleys with gray caged ball bearing wheels on 8"	35-C pendants with 5/16" shackle hole on 8" center
3-3B016W4P31	348 bolted chain	YDP	trolleys with plated sealed ball bearing steel wheels on 8"	35-C pendants with 17/32" shackle hole on 8" center
3-3B016W4P32	348 bolted chain	YDP	trolleys with plated sealed ball bearing steel wheels on 8"	35-C pendants with 5/16" shackle hole on 8" center
4-3B016W1P01	348 bolted chain	ZNP	trolleys with ball bearing wheels with s.s. races on 8"	35-C pendants with 17/32" shackle hole on 8" center
4-3B016W1P02	348 bolted chain	ZNP	trolleys with ball bearing wheels with s.s. races on 8"	35-C pendants with 5/16" shackle hole on 8" center
4-3B016W2P01	348 bolted chain	ZNP	trolleys with blue plastic non ball bearing wheels on 8"	35-C pendants with 17/32" shackle hole on 8" center
4-3B016W2P02	348 bolted chain	ZNP	trolleys with blue plastic non ball bearing wheels on 8"	35-C pendants with 5/16" shackle hole on 8" center
4-3B016W3P01	348 bolted chain	ZNP	trolleys with gray caged ball bearing wheels on 8"	35-C pendants with 17/32" shackle hole on 8" center
4-3B016W3P02	348 bolted chain	ZNP	trolleys with gray caged ball bearing wheels on 8"	35-C pendants with 5/16" shackle hole on 8" center
4-3B016W4P01	348 bolted chain	ZNP	trolleys with plated sealed ball bearing steel wheels on 8"	35-C pendants with 17/32" shackle hole on 8" center
4-3B016W4P02	348 bolted chain	ZNP	trolleys with plated sealed ball bearing steel wheels on 8"	35-C pendants with 5/16" shackle hole on 8" center

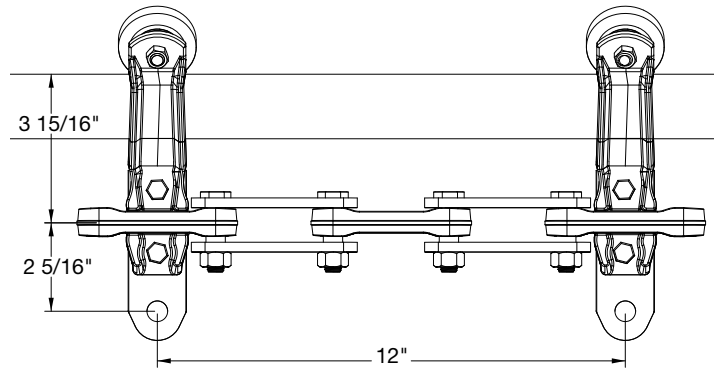
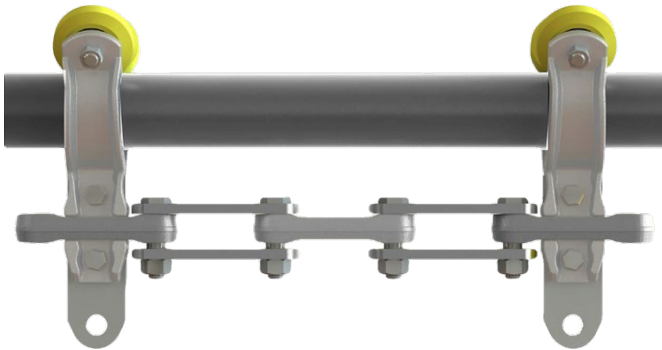
348 bolted chain with pipe track brackets on 6" center



Shown: 348 chain zinc nickel plating (ZNP), pipe track brackets with yellow pipe track wheels on 6" and 35-C pendants with 17/32" shackle hole on 6" center

Part no.	Chain type	Plating	Wheel type	Pendant type
3-1B021W5P21	348 bolted chain	YDP	clear zinc trolleys and yellow pipe track wheels with s.s. races on 6"	35-C pendants with 17/32" shackle hole on 6" center
3-1B021W5P22	348 bolted chain	YDP	clear zinc trolleys and yellow pipe track wheels with s.s. races on 6"	35-C pendants with 5/16" shackle hole on 6" center
4-1B021W5P21	348 bolted chain	ZNP	clear zinc trolleys and yellow pipe track wheels with s.s. races on 6"	35-C pendants with 17/32" shackle hole on 6" center
4-1B021W5P22	348 bolted chain	ZNP	clear zinc trolleys and yellow pipe track wheels with s.s. races on 6"	35-C pendants with 5/16" shackle hole on 6" center

348 bolted chain with pipe track brackets on 12" center

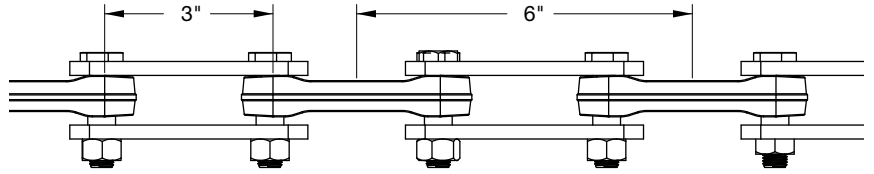


Shown: 348 chain yellow dichromate plating (YDP), SANI brackets with yellow pipe track wheels on 12" and 35-C pendants with 17/32" shackle hole on 12" center

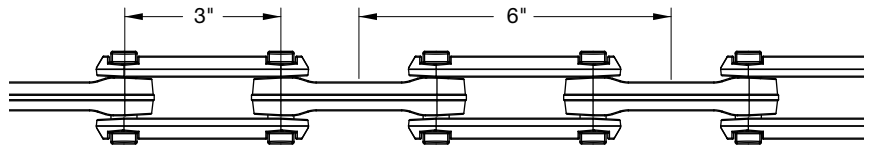
Part no.	Chain type	Plating	Wheel type	Pendant type
3-1B024W5P21	348 bolted chain	YDP	clear zinc trolleys and yellow pipe track wheels with s.s. races on 12"	35-C pendants with 17/32" shackle hole on 12" center
3-1B024W5P22	348 bolted chain	YDP	clear zinc trolleys and yellow pipe track wheels with s.s. races on 12"	35-C pendants with 5/16" shackle hole on 12" center
4-1B024W5P21	348 bolted chain	ZNP	clear zinc trolleys and yellow pipe track wheels with s.s. races on 12"	35-C pendants with 17/32" shackle hole on 12" center
4-1B024W5P22	348 bolted chain	ZNP	clear zinc trolleys and yellow pipe track wheels with s.s. races on 12"	35-C pendants with 5/16" shackle hole on 12" center

Chains without trolleys

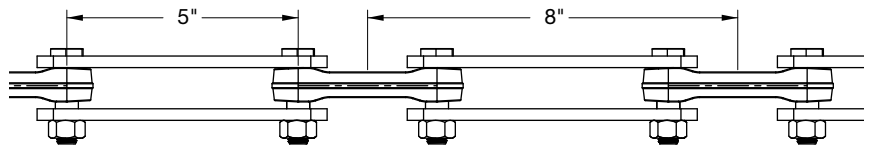
348 bolted chain



348 I-Pin chain



348 chain with extended side bar for 8" center chain



Ordering code

Plating	Chain type
3- Zinc-yellow dichromate plating (YDP)	1 348 bolted chain
4- Zinc nickel plating (ZNP)	2 348 I-Pin chain
	3 348 chain with extended side bar for 8" configurations

Part no.	Chain type	Plating	Assembling
3-1	348 bolted chain	YDP	assembled in 10 ft sections
3-2	348 I-Pin chain	YDP	assembled in 10 ft sections
3-3	348 chain with ext. side bar	YDP	assembled in 10 ft sections
4-1	348 bolted chain	ZNP	assembled in 10 ft sections

348 trolley halves

348 trolley halves



Gray ball bearing wheel with stainless steel races



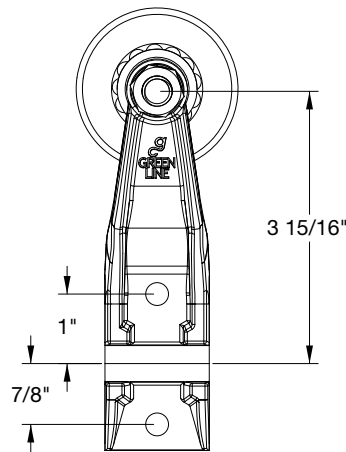
Blue non ball bearing wheel



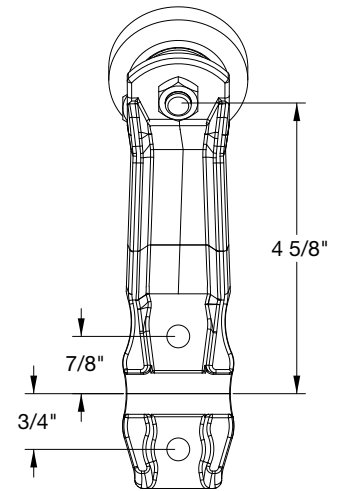
Gray caged ball bearing wheel



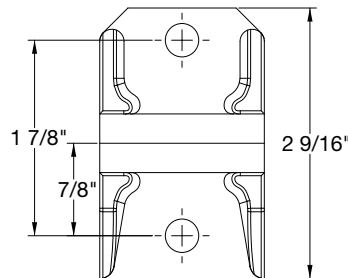
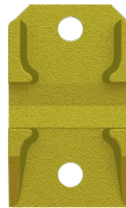
Plated ball bearing steel wheel



348 pipe track trolley half



Trolley intermediate plate



Track cleaning brush



Ordering code

Plating	Brackets	Wheel type
3- Zinc-Yellow dichromate plating	B01 348 bracket	W1 Gray ball bearing wheels with stainless steel races
4- Zinc Nickel plating	B02 Pipe track bracket	W2 Blue non ball bearing plastic wheel
5- Clear zinc plating	B03 37-HF intermediate plate	W3 Gray caged ball bearing wheel
6- Stainless steel		W4 Plated ball bearing steel wheel
		W5 Pipe track wheel

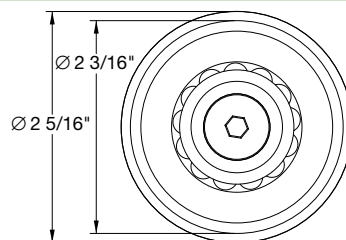
Part no.	Chain type	Plating	Wheel type
3-B01W1	348 trolley half	yellow dichromate	gray ball bearing wheel and stainless steel races
3-B01W2	348 trolley half	yellow dichromate	blue non ball bearing wheel
3-B01W3	348 trolley half	yellow dichromate	gray caged ball bearing wheel
3-B01W4	348 trolley half	yellow dichromate	plated ball bearing steel wheel
4-B01W1	348 trolley half	Zinc nickel	gray ball bearing wheel and stainless steel races
4-B01W2	348 trolley half	Zinc nickel	blue non ball bearing wheel
4-B01W3	348 trolley half	Zinc nickel	gray caged ball bearing wheel
4-B01W4	348 trolley half	Zinc nickel	plated ball bearing steel wheel
5-B02W5	348 pipe track trolley half	Clear zinc	yellow pipe track wheel
3-B03	Trolley intermediate plate	yellow dichromate	–
4-B03	Trolley intermediate plate	Zinc nickel	–
2095	Track cleaning brush set for 3" I-Beam with 16 individual brushes	–	–

348 wheels

Part no. W1

W1N
7/16" lock nut

Gray ball bearing wheels,
with stainless steel races,
Hardware needed



Part no. W2

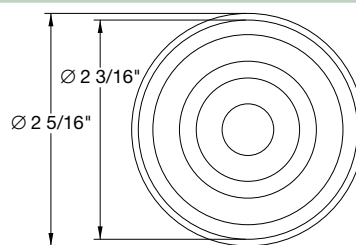
W2W
3/8" flat washer

Blue non ball bearing plastic wheel
Hardware needed

W2N
7/16" lock nut

W2B
7/16" hex bolt

W2F
Ferrule

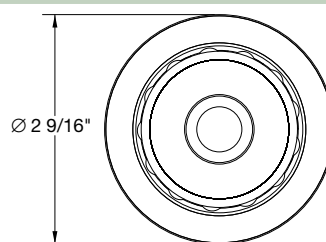


Part no. W3

W3B
7/16" shoulder bolt

Gray caged ball bearing wheel
Hardware needed

W3N
7/16" lock nut

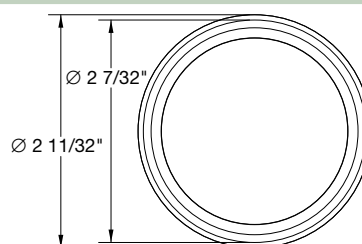


Part no. W4

403035
7/16" hex jam nut

Plated ball bearing steel wheel
Hardware needed

403036
7/16" lock washer



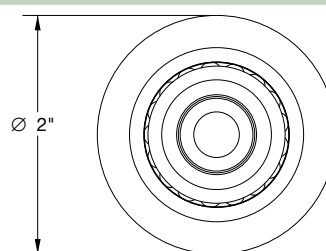
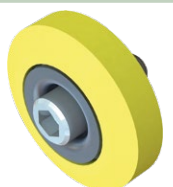
Part no. W5

W5S
Spacer

Pipe track wheel
Hardware needed

W5B
3/8" bolt

W5N
3/8" lock nut



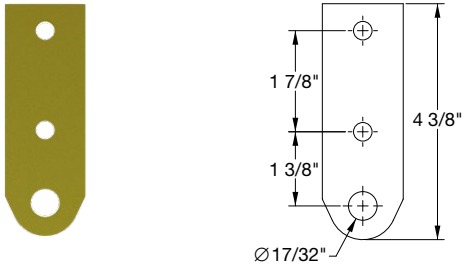
Ordering code

Wheel type

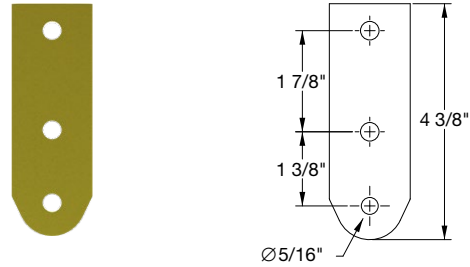
- W1** Gray ball bearing wheels with stainless steel races
- W2** Blue non ball bearing plastic wheel
- W3** Gray caged ball bearing wheel
- W4** Plated ball bearing steel wheel
- W5** Pipe track wheel

348 pendants and attachments

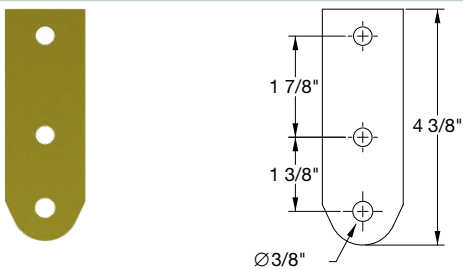
35-C pendant, 17/32" hole, Part no. P31



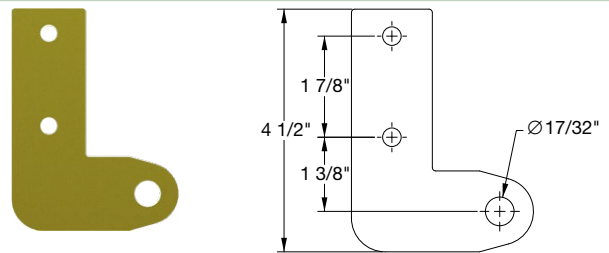
35-C pendant 5/16" hole, Part no. P32



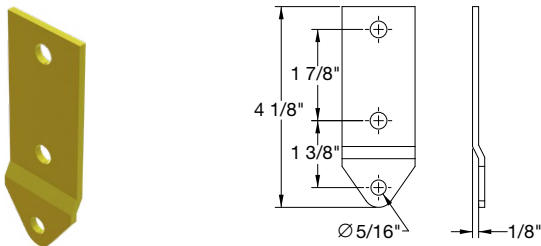
35-C pendant 3/8" hole, Part no. P33



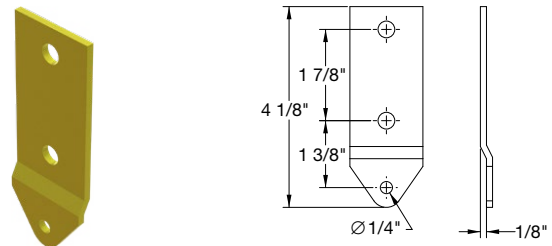
2" offset, 17/32" hole, Part no. P36



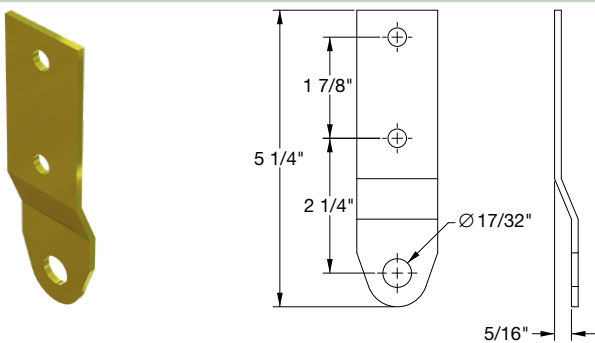
Sizing pendant, 5/16" hole, Part no. P47



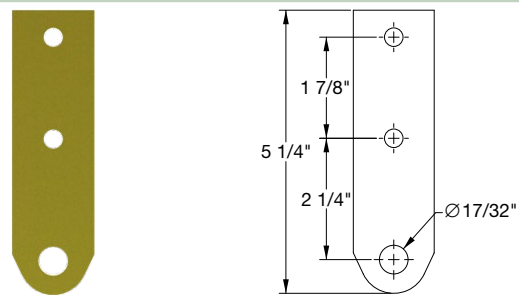
Sizing pendant, 1/4" hole, Part no. P48



31-H pendant, 17/32" hole, Part no. P45



32-C pendant, 17/32" hole, Part no. P42



other pendants see list next page

348 pendants and attachments

Part no.	Plating	Pendant type
P01	Zink nickel plated	35-C with 17/32" shackle hole
P02	Zink nickel plated	35-C with 5/16" shackle hole
P03	Zink nickel plated	35-C with 3/8" shackle hole
P04	Zink nickel plated	35-C with 17/32" shackle hole, hardened
P05	Zink nickel plated	35-C with 5/16" shackle hole, hardened
P06	Zink nickel plated	35-C 2" offset with 17/32" shackle hole
P07	Zink nickel plated	35-C 2" offset with 5/16" shackle hole
P08	Zink nickel plated	35-C 2" offset with 3/8" shackle hole
P09	Zink nickel plated	35-C 3" offset with 17/32" shackle hole
P10	Zink nickel plated	35-C 3" offset with 5/16" shackle hole
P11	Zink nickel plated	35-C 3" offset with 3/8" shackle hole
P12	Zink nickel plated	32-C with 17/32" shackle hole
P13	Zink nickel plated	32-C with 5/16" shackle hole
P14	Zink nickel plated	32-C with 3/8" shackle hole
P15	Zink nickel plated	31-H attachment with 17/32" shackle hole
P16	Zink nickel plated	31-H attachment with 5/16" shackle hole
P17	Zink nickel plated	Sizing attachment with 5/16" shackle hole
P18	Zink nickel plated	Sizing attachment with 1/4" shackle hole
P19	Zink nickel plated	Spacer plate
P31	Yellow dichromate plated	35-C with 17/32" shackle hole
P32	Yellow dichromate plated	35-C with 5/16" shackle hole
P33	Yellow dichromate plated	35-C with 3/8" shackle hole
P34	Yellow dichromate plated	35-C with 17/32" shackle hole
P35	Yellow dichromate plated	35-C with 5/16" shackle hole, hardened
P36	Yellow dichromate plated	35-C 2" offset with 17/32" shackle hole
P37	Yellow dichromate plated	35-C 2" offset with 5/16" shackle hole
P38	Yellow dichromate plated	35-C 2" offset with 3/8" shackle hole
P39	Yellow dichromate plated	35-C 3" offset with 17/32" shackle hole
P40	Yellow dichromate plated	35-C 3" offset with 5/16" shackle hole
P41	Yellow dichromate plated	35-C 3" offset with 3/8" shackle hole
P42	Yellow dichromate plated	32-C with 17/32" shackle hole
P43	Yellow dichromate plated	32-C with 5/16" shackle hole
P44	Yellow dichromate plated	32-C with 3/8" shackle hole
P45	Yellow dichromate plated	31-H attachment with 17/32" shackle hole
P46	Yellow dichromate plated	31-H attachment with 5/16" shackle hole
P47	Yellow dichromate plated	Sizing attachment with 5/16" shackle hole
P48	Yellow dichromate plated	Sizing attachment with 1/4" shackle hole
P49	Yellow dichromate plated	Spacer plate
P61	Stainless steel	35-C with 17/32" shackle hole
P62	Stainless steel	35-C with 5/16" shackle hole
P63	Stainless steel	35-C with 3/8" shackle hole
P64	Stainless steel	32-C with 17/32" shackle hole
P65	Stainless steel	32-C with 5/16" shackle hole
P66	Stainless steel	32-C with 3/8" shackle hole
P67	Stainless steel	35-C 2" offset with 17/32" shackle hole
P68	Stainless steel	35-C 2" offset with 5/16" shackle hole
P69	Stainless steel	35-C 2" offset with 3/8" shackle hole
P70	Stainless steel	35-C 3" offset with 17/32" shackle hole
P71	Stainless steel	35-C 3" offset with 5/16" shackle hole
P72	Stainless steel	35-C 3" offset with 3/8" shackle hole
P73	Stainless steel	31-H attachment with 17/32" shackle hole
P74	Stainless steel	31-H attachment with 5/16" shackle hole
P75	Stainless steel	Sizing attachment with 5/16" shackle hole
P76	Stainless steel	Sizing attachment with 1/4" shackle hole
P77	Stainless steel	Spacer plate

348 hardware and bushings

Chain bolts and nuts

Part no.	Chain type
3-1B	348 chain bolt YDP (yellow)
3-1N	348 chain nut YDP (yellow)
4-1B	348 chain bolt ZNP (silver)
4-1N	348 chain nut ZNP (silver)

Shackle bushings

Part no.	
4040161	1/2"OD x 5/16"ID x 3/8"L
404017	1/2"OD x 5/16"ID x 1/2"L
4040171	1/2"OD x 5/16"ID x 9/16"L
40401711	1/2"OD x 5/16"ID x 5/8"L
4040172	1/2"OD x 3/8"ID x 1/2"L
4040173	1/2"OD x 5/16"ID x 1"L
4040174	1/2"OD x 5/16"ID x 1-1/8"L
404019	1/2"OD x 3/8"ID x 3/8"L
4040191	1/2"OD x 5/16"ID x 1/4"L
4040192	1/2"OD x 3/8"ID x 1/4"L
4040193	1/2"OD x 5/16"ID x 5/16"L
4040194	1/2"OD x 5/16"ID x 7/16"L
4040195	1/2"OD x 1/4"ID x 1/2"L
4040195	1/2"OD x 1/4"ID x 1/2"L
D5167	5/8"OD x 3/8"ID x 5/16"L

Trolley bolts and nuts

Part no.	Chain type
3TB	348 trolley bolt YDP (yellow)
3TN	348 trolley locknut YDP (yellow)
4TB	348 trolley bolt ZNP (silver)
4TN	348 trolley locknut ZNP (silver)

Chain bolts and nuts

Part no.	
3-1B	348 Chain bolt, yellow dichromate
3-1N	348 Lock nut for chain bolt, yellow dichromate



Trolley bolts and nuts

Part no.	
3TB	348 Trolley bolt, yellow dichromate
3TN	348 Trolley lock nut, yellow dichromate



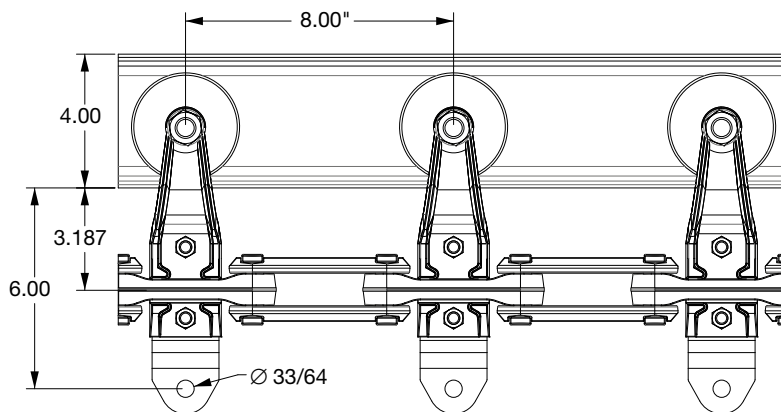
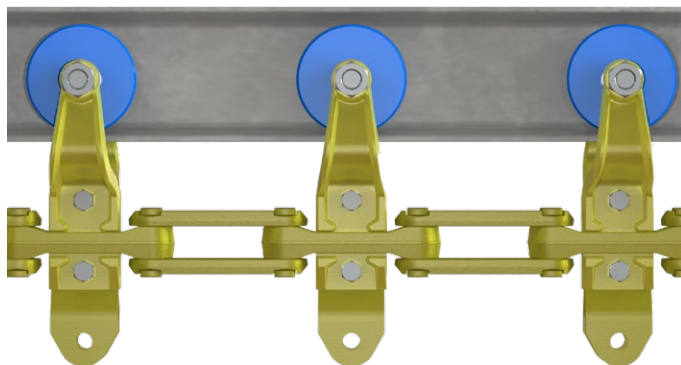
◆ X-458 chain and parts

Ordering code for complete X-458 chain assemblies

Ordering code

Plating	Chain type	Brackets	Spacing	Wheel type	Pendant type
0- black, no plating 3- YDP: Zinc yellow dichromate plating	5 X-458 I-Pin chain	B04 Bracket with bolt hole B05 Bracket for swaged wheel	1 8" trolleys 8" pendants 2 16" trolleys 16" pendants	W6 Blue non ball bearing plastic wheel W11 Steel ball bearing wheel	P80 H-Attachment P81 H-attachment long P82 C-Attachment P83 I-Attachment

Part no. 3-5B041W6P80



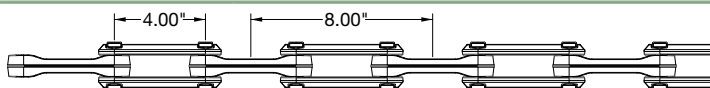
X-458 I-Pin chain, zinc yellow dichromate, trolleys with blue non ball bearing wheels on 8" center and H-Attachments on 8" center

X-458 chains and parts

Part no.

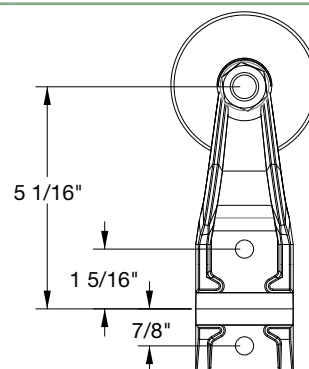
3-5

X-458 chain plated zinc yellow dichromate



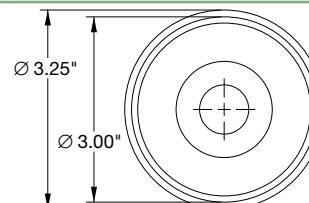
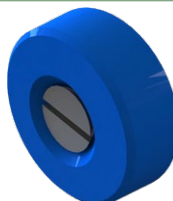
3-B04W6

X-458 trolley half with plastic wheel



W6

X-458 plastic wheel

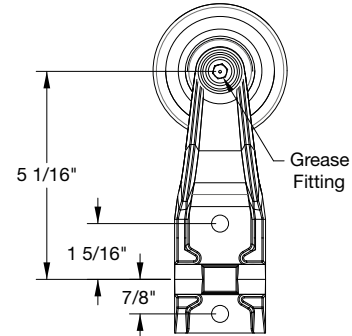


X-458 chains and parts

Part no.

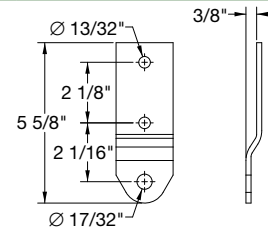
0-B05W11

X-458 trolley half with swaged wheel, no plating



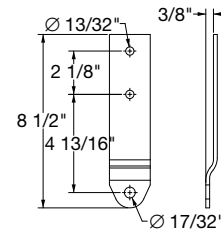
P80

X-458 H-Attachment



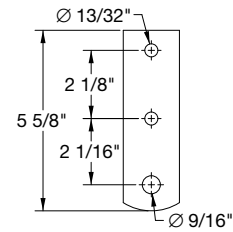
P81

X-458 H-Attachment, long



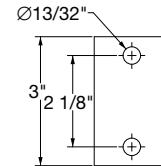
P82

X-458 C-Attachment



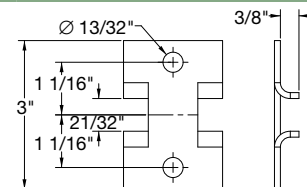
P83

X-458 space plate



3-B05

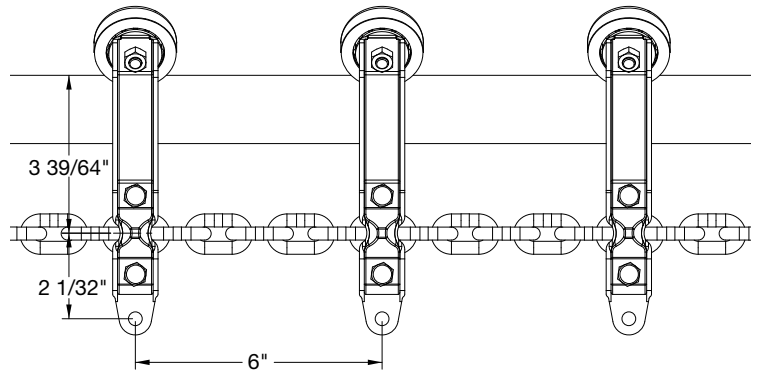
X-458 intermediate plate



Complete chain assemblies



Part no. 5-6B301W9 Link chain assembly Linco, 6" center



Part no. 5-6B311W9 Link chain assembly Linco, 6" center (plastic-click version)

Chains and parts

Part no.

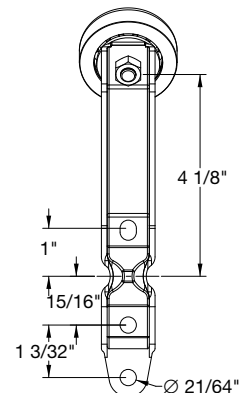
B30W9 Linco style stainless steel trolley half with blue ball bearing wheel

B31W9 Linco Style plastic bracket, click version

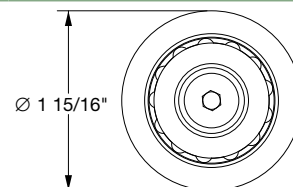


B30W9

B31W9



W9 Linco style blue ball bearing wheel



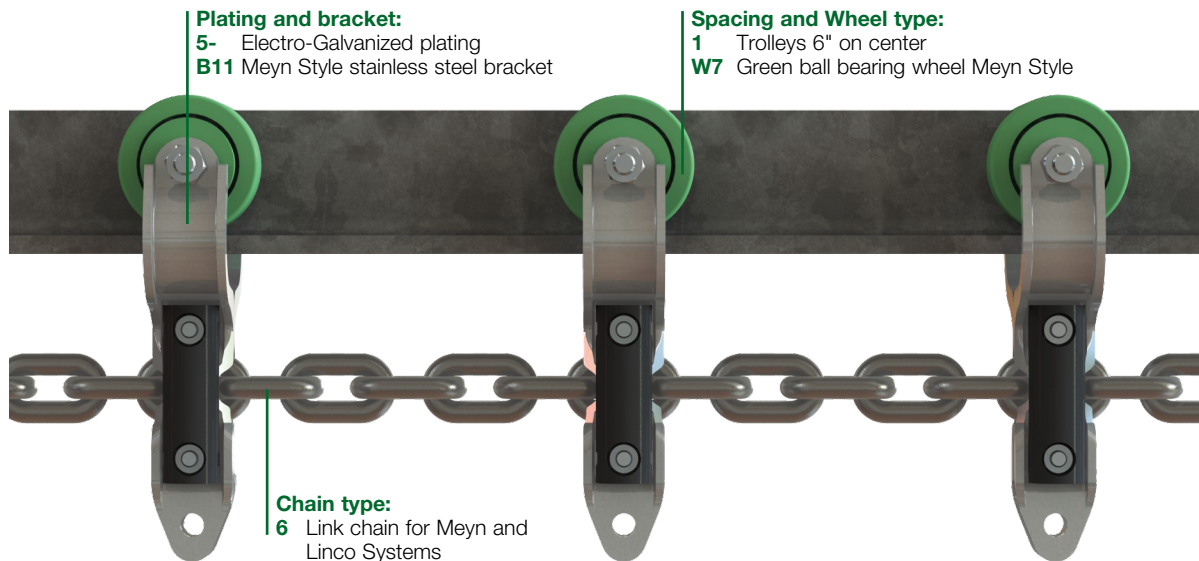
5-6 Link chain for Meyn and Linco systems, plated

C5-6 Chain connecting link



Ordering code

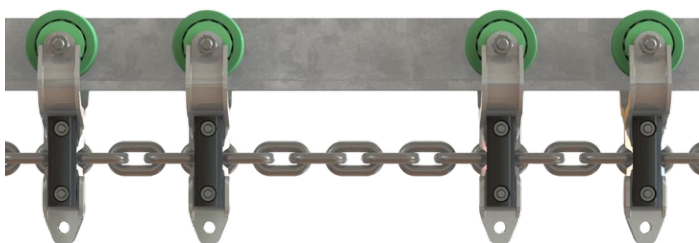
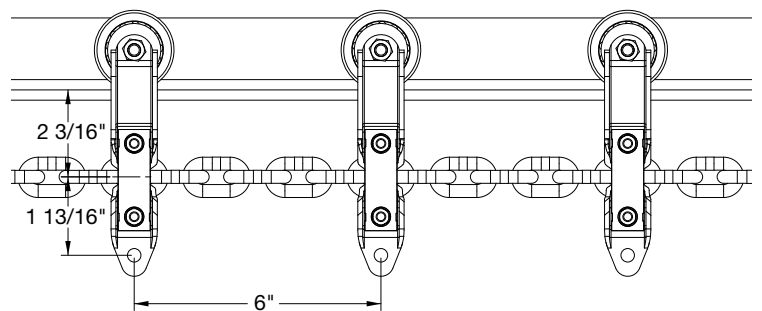
Plating	Chain type	Brackets	Spacing	Wheel type
5- Electro-Galvanized 6- Stainless Steel	6 Link chain for MEYN and LINCO Systems 7 Link chain for STORK Systems 8 Link chain MEYN turkey lines (10 mm x 38 mm)	B10 Meyn Style plastic bracket B11 Meyn Style stainless steel bracket B11R Meyn Style stainless steel bracket, refurbished B12(W7) Meyn Style plastic bracket B14 Meyn Style turkey bracket B23(W8) Stork Style plastic bracket/wheel combo long with shackle hole B24(W8) Stork Style plastic bracket/wheel combo short B25(W8) Stork Style plastic MX bracket/wheel combo B30 Linco Style stainless steel bracket	0 Trolleys 4" on center 1 Trolleys 6" on center 2 Trolleys 8" on center 3 Trolleys 12" on center 4 Trolleys alternating 4" and 8" on center 5 Trolleys alternating long/short 6" center 6 Trolleys alternating MX/short 6" center 7 Trolleys alternating long/long/short 6" center 8 Trolleys alternating short/short/long 12" center 9 Trolleys alternating 6" and 9", turkey brackets	W7 Green ball bearing wheel Meyn Style W8 Blue ball bearing wheel Stork Style W9 Blue ball bearing wheel Linco Style W10 Gray heavy duty wheel with stainless steel races W11 Blue non-ball bearing turkey bracket wheel W12 Blue non-ball bearing link chain wheel W14 Gray ball bearing turkey bracket wheel



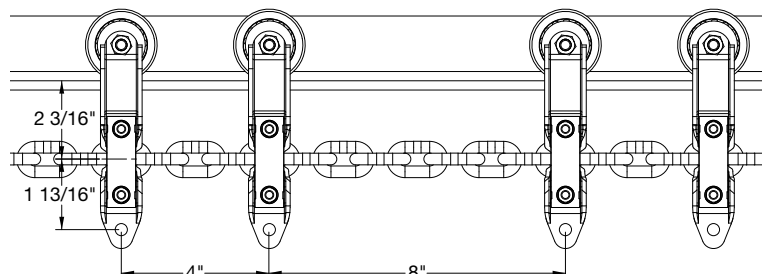
Complete chain assemblies



Part no. 5-6B111W7 Link chain assembly MEYN Style, stainless steel trolleys on 6"



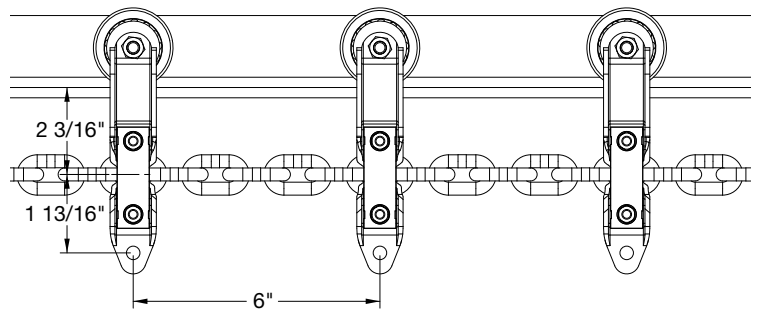
Part no. 5-6B114W7 Link chain assembly MEYN Style, 4" and 8" alternating (also available with W10 wheels)



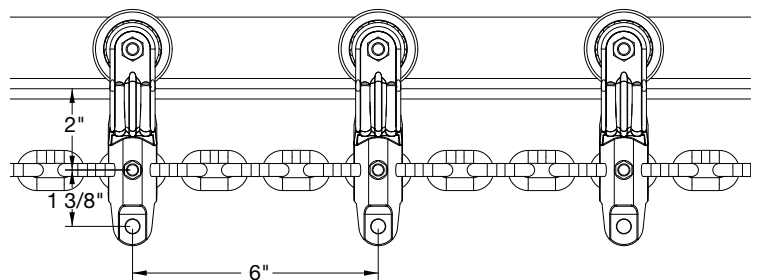
Complete chain assemblies



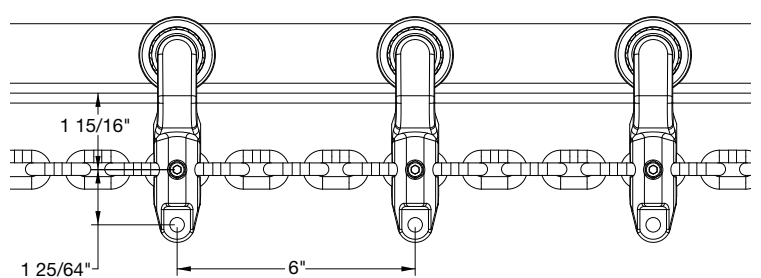
Part no. 5-6B111W10 Link chain assembly MEYN Style, stainless steel trolleys on 6"



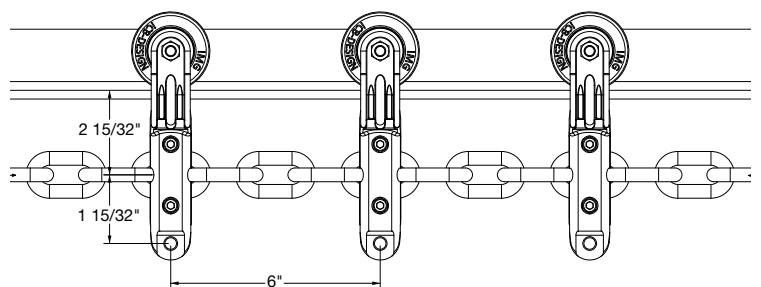
Part no. 5-6B101W7 Link chain assembly MEYN Style, plastic trolleys, 6"



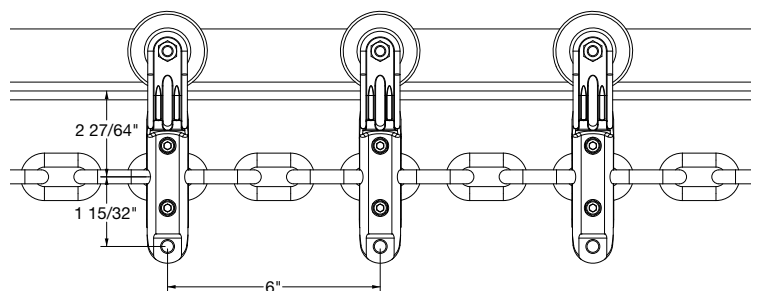
Part no. 5-6B121W7 Link chain assembly MEYN Style, plastic trolleys new style, 6" center



Part no. 5-8B141W14 Link chain assembly MEYN Style on 10x38 mm chain, ball bearing wheels 6" center



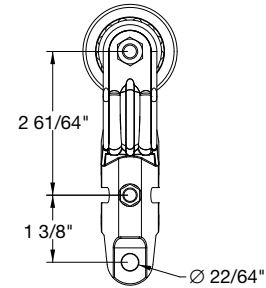
Part no. 5-8B141W11 Link chain assembly MEYN Style on 10x38 mm chain, non-ball bearing wheels 6" center



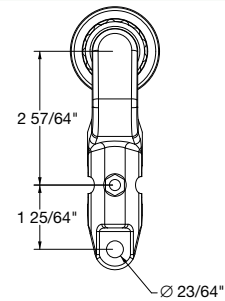
Chains and parts

Part no.

B10W7 Meyn Style plastic trolley half

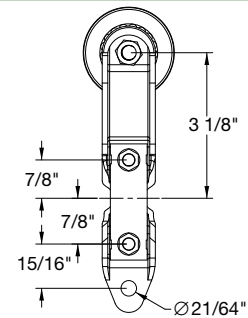


W12W7 Meyn Style plastic trolley half, wheel/bracket combo



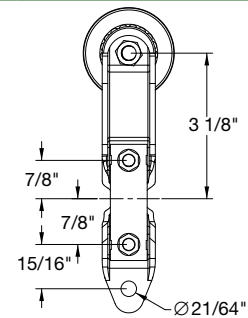
B11W7 Meyn Style stainless steel trolley half

B11RW7 Meyn Style stainless steel trolley half, refurbished

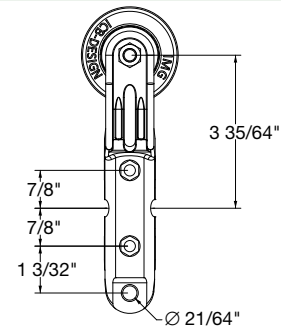


B11W10 Meyn Style stainless steel trolley half with heavy duty wheel

B11RW10 Meyn Style stainless steel trolley half with heavy duty wheel, refurbished



B14W14 Meyn Style turkey trolley half with ball bearing wheel

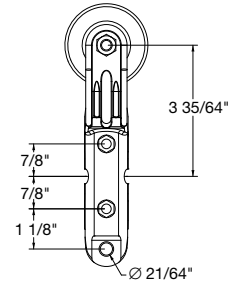


Chains and parts

Part no.

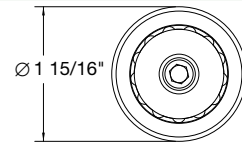
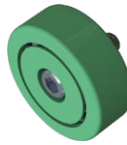
B14W11

Meyn Style turkey trolley half with non-ball bearing wheel



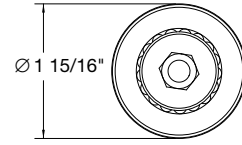
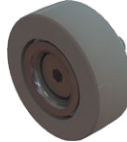
W7

Meyn style green wheel



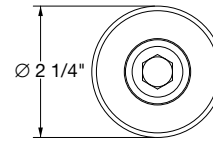
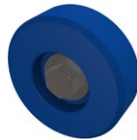
W10

Meyn style gray link chain wheel with s.s. races



W11

Non-Ball bearing link chain



5-6

Link chain for Meyn systems, plated

6-6

Link chain for Meyn systems, stainless steel

5-8

Link chain for Meyn turkey systems (10x38 mm)



C5-6

Connecting link for 8 mm chain

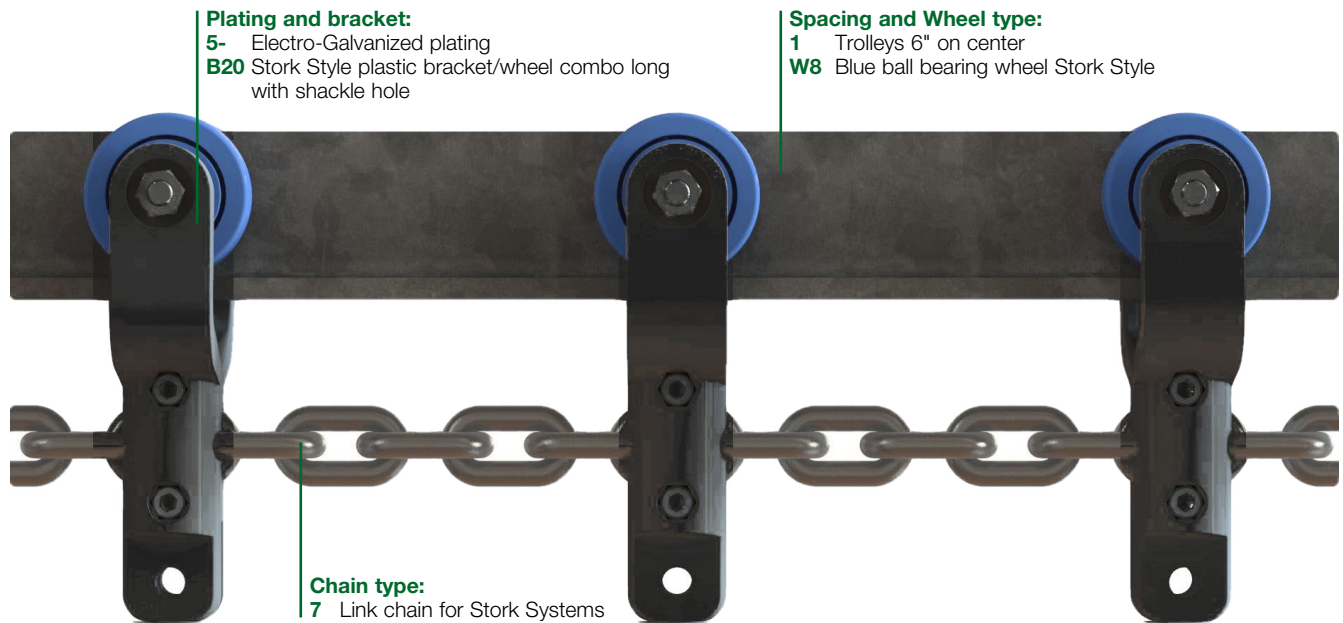
C5-8

Connecting link for 10 mm chain



Ordering code

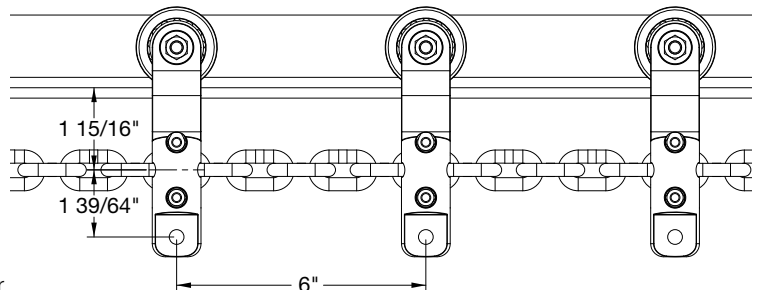
Plating	Chain type	Brackets	Spacing	Wheel type
5- Electro-Galvanized	6 Link chain for MEYN and LINCO Systems	B10 Meyn Style plastic bracket	0 Trolleys 4" on center	W7 Green ball bearing wheel Meyn Style
6- Stainless Steel	7 Link chain for STORK Systems	B11 Meyn Style stainless steel bracket	1 Trolleys 6" on center	W8 Blue ball bearing wheel Stork Style
	8 Link chain MEYN turkey lines (10 mm x 38 mm)	B11R Meyn Style stainless steel bracket, refurbished	2 Trolleys 8" on center	W9 Blue ball bearing wheel Linco Style
		B12(W7) Meyn Style plastic bracket	3 Trolleys 12" on center	W10 Gray heavy duty wheel with stainless steel races
		B14 Meyn Style turkey bracket	4 Trolleys alternating 4" and 8" on center	W11 Blue non-ball bearing turkey bracket wheel
		B20(W8) Stork Style plastic bracket/wheel combo long with shackle hole	5 Trolleys alternating long/short 6" center	W12 Blue non-ball bearing link chain wheel
		B21(W8) Stork Style plastic bracket/wheel combo short	6 Trolleys alternating MX/short 6" center	W14 Gray ball bearing turkey bracket wheel
		B22(W8) Stork Style plastic MX bracket/wheel combo	7 Trolleys alternating long/long/short 6" center	
		B30 Linco Style stainless steel bracket	8 Trolleys alternating short/short/long 12" center	
		B31 Linco plastic trolley halve	9 Trolleys alternating 6" and 9", turkey brackets	



Complete chain assemblies



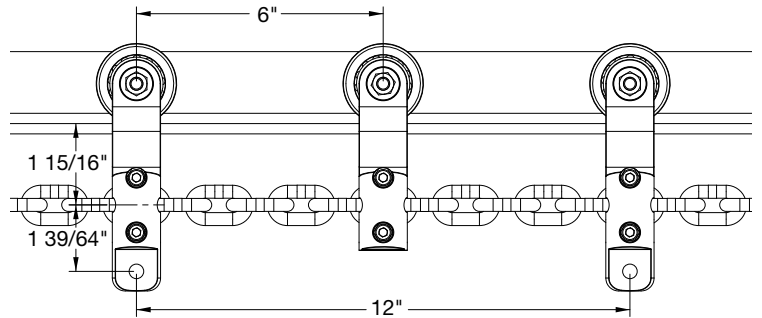
Part no. 5-7B201W8 Link chain assembly Stork Style, long-long 6" center



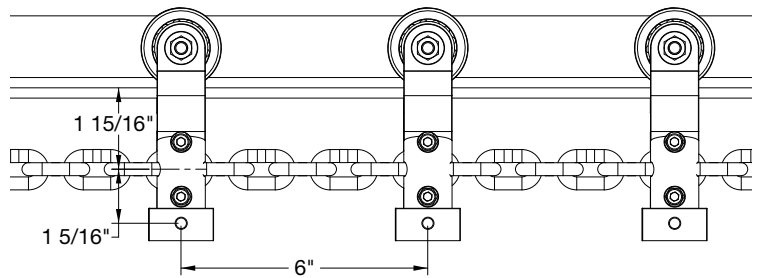
Complete chain assemblies



Part no. 5-7B205W8 Link chain assembly Stork Style, long/short alternating, 6" center



Part no. 5-7B221W8 Link chain assembly Stork Style, MX, 6" center

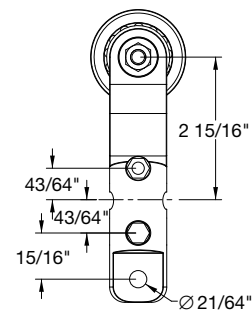


Chains and parts

Part no.

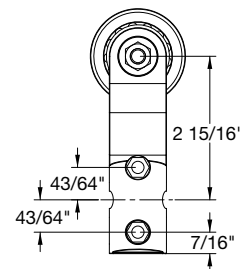
B20W8

Stork Style plastic Trolley Half, long with shackle hole and blue ball bearing wheel



B21W8

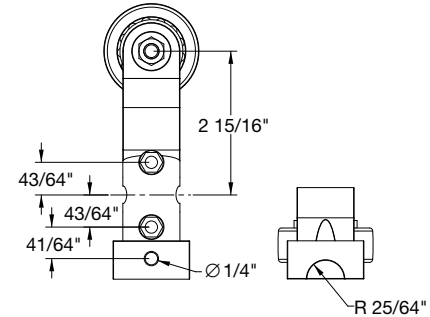
Stork Style plastic trolley half, short, with blue ball bearing wheel



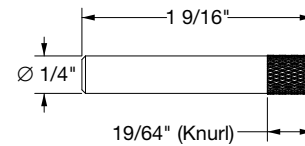
Chains and parts

Part no.

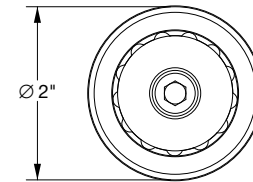
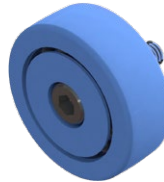
B22W8 Stork Style plastic Trolley Half, MX, with blue ball bearing wheel



B25-PIN Pin for MX bracket



W8 Stork style blue ball bearing wheel



5-7 Link chain for Stork systems, plated

C5-6 Chain connecting link



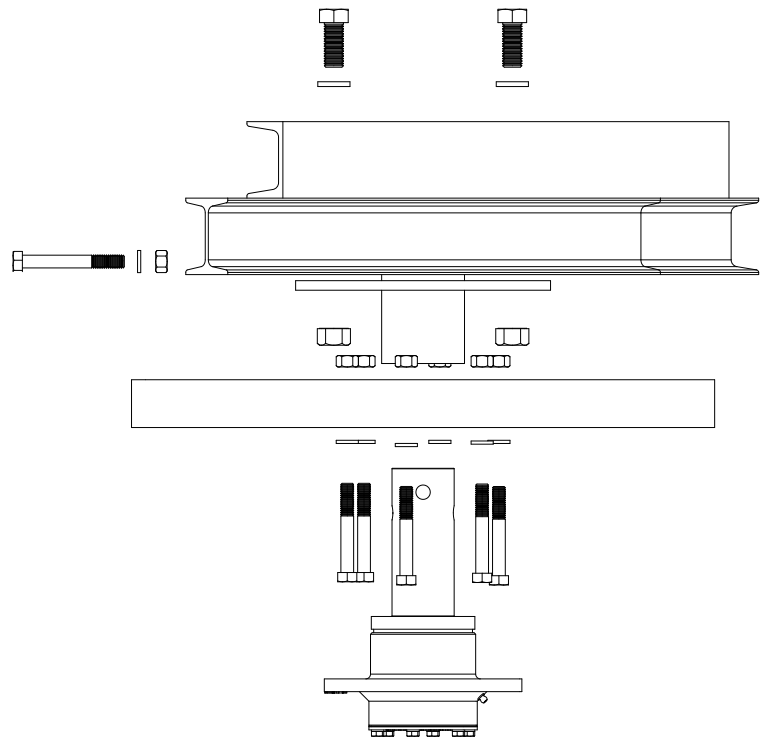
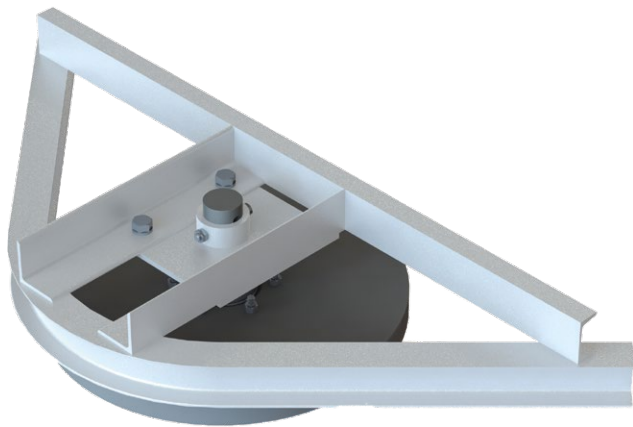
Hardware for Meyn, Stork and Linco style chains and parts

Part no.

Part

M8X30-A2 DIN 912	Bolt to attach wheel to Meyn style and Stork style plastic brackets
M8X25-A2 DIN 912	Bolt to attach wheel to Meyn style stainless steel brackets
M8X30-A2 DIN 7791	Bolt to attach wheel on Linco style stainless steel bracket
M8X16-A2 DIN 912	Bolt to attach Linco trolleys on link chain
M8-A2 DIN 985	Locknut to attach wheel to Meyn, Stork and Linco style brackets (and Linco trolleys on link chain)
M6X35-A2 DIN 912	Bolt to attach Meyn style plastic and stainless steel trolleys on link chain
M6X30-A2 DIN 912	Bolt to attach Stork style plastic trolleys on link chain
M6-A2 short DIN 986	Locknut to put Meyn and Stork style trolleys on link chain
C5-6	Connecting link for 8 mm chain
C5-8	Connecting link for 10 mm chain

I-beam corner turns with heavy duty 6-bolt bearing assembly, turn wheel and flange



Part no.	Size	Heavy duty turn	Bearing assembly
IB-1545	15" x 45°	complete	6 bolt
IB-1590	15" x 90°	complete	6 bolt
IB-15180	15" x 180°	complete	6 bolt
IB-1945	19" x 45°	complete	6 bolt
IB-1990	19" x 90°	complete	6 bolt
IB-19180	19" x 180°	complete	6 bolt
IB-2445	24" x 45°	complete	6 bolt
IB-2490	24" x 90°	complete	6 bolt
IB-24180	24" x 180°	complete	6 bolt

Parts to heavy duty 6-bolt turn

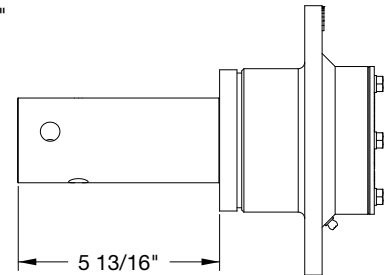
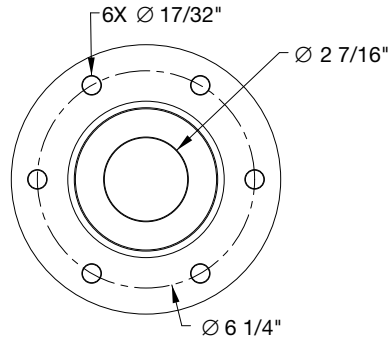
Part no.	Part
40602	Heavy duty turn bearing assembly, aluminum, 6 bolt
40603	Flange to heavy duty bearing assembly, galvanized
IB-146G	15" (13-7/8" X 1-7/8") turn wheel galvanized, 6 hole
IB-146P	15" (13-7/8" X 1-7/8") turn wheel, plastic, 6 hole
IB-1545F	15" frame (15" diameter X 45°) galvanized
IB-1590F	15" frame (15" diameter X 90°) galvanized
IB-15180F	15" frame (15" diameter X 180°) galvanized
IB-186G	19" (17-7/8" x 1-7/8") turn wheel galvanized, 6 hole
IB-186P	19" (17-7/8" x 1-7/8") turn wheel, plastic, 6 hole
IB-1945F	19" frame (19" diameter X 45°) galvanized
IB-1990F	19" frame (19" diameter X 90°) galvanized
IB-19180F	19" frame (19" diameter X 180°) galvanized
IB-236G	24" (22-7/8" x 1-7/8") turn wheel galvanized, 6 bolt
IB-236P	24" (22-7/8" x 1-7/8") turn wheel, plastic, 6 hole
IB-2445F	24" frame (24" diameter X 45°) galvanized
IB-2490F	24" frame (24" diameter X 90°) galvanized
IB-24180F	24" frame (24" diameter X 180°) galvanized

Parts to heavy duty 6-bolt turn

Part no.

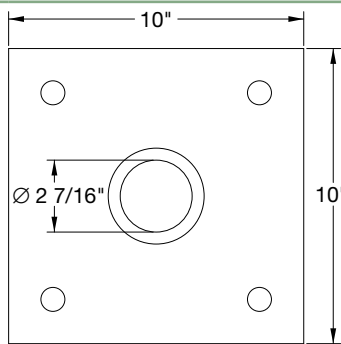
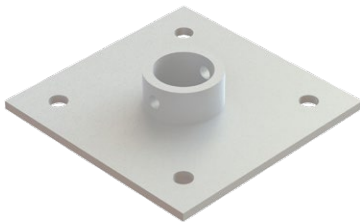
40602

6-bolt heavy duty bearing assembly



40603

Flange to 6 bolt bearing assembly

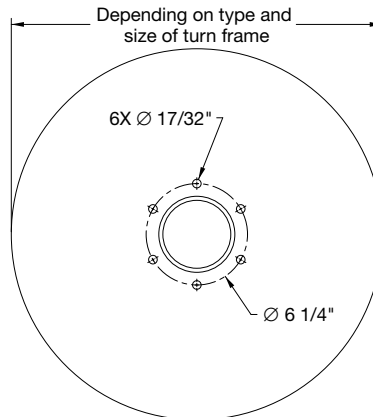
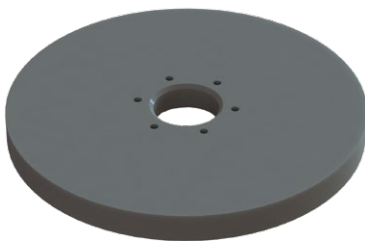


IB-146P
(13 7/8" dia.
for 15" turn)

IB-186P
(17 7/8" dia.
for 19" turn)

IB-236P
(22 7/8" dia.
for 24" turn)

6-Bolt plastic turn wheel

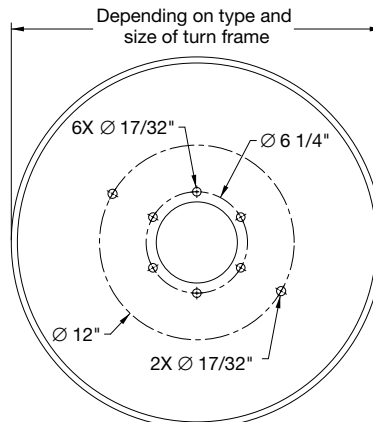
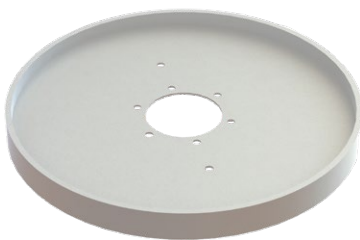


IB-146G
(13 7/8" dia.
for 15" turn)

IB-186G
(17 7/8" dia.
for 19" turn)

IB-236G
(22 7/8" dia.
for 24" turn)

6-Bolt galvanized steel turn wheel

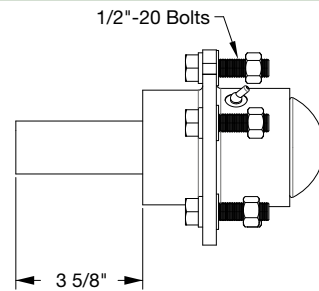
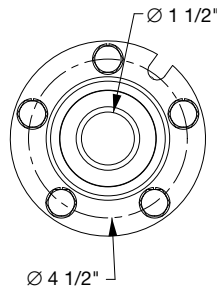


Parts to 5-bolt turn

Part no.

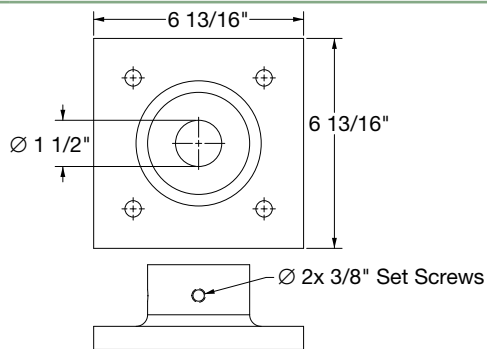
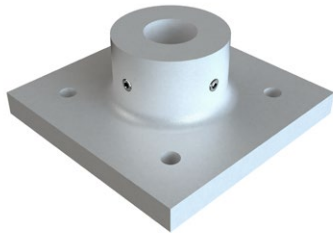
1820

5-bolt turn bearing assembly



1840A

Aluminum flange for 5-bolt turn bearing



IB-155P

(15" diameter)

IB-155P

(13 7/8" diameter)

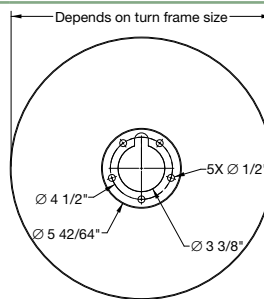
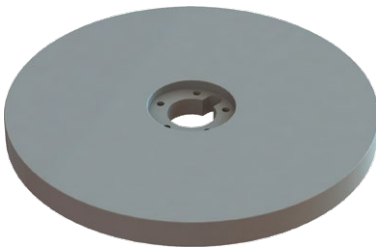
IB-195P

(19" diameter)

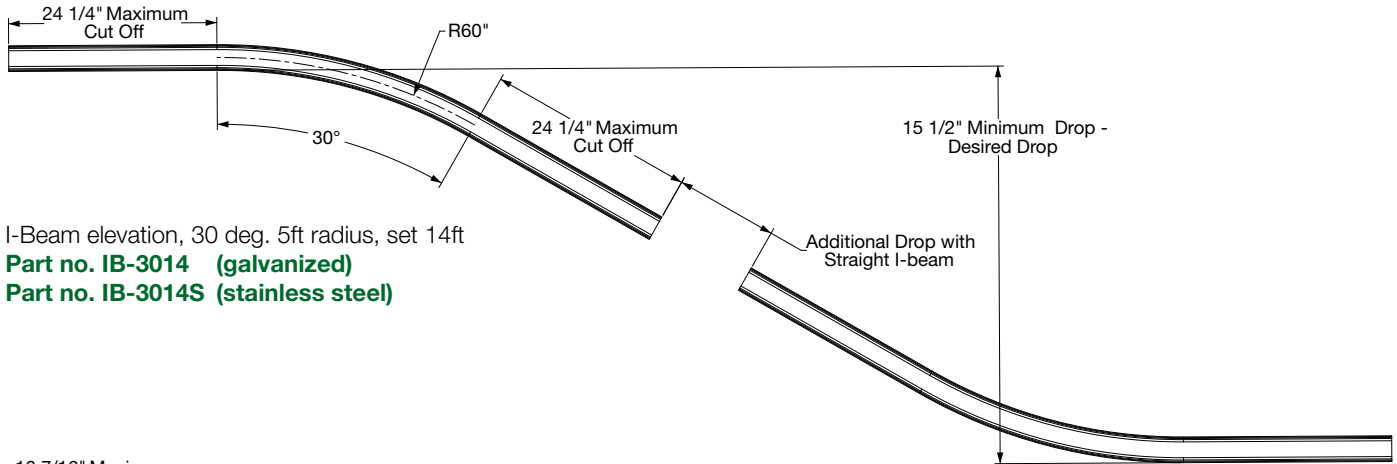
IB-185P

(17 7/8" diameter)

5-bolt plastic turn wheel



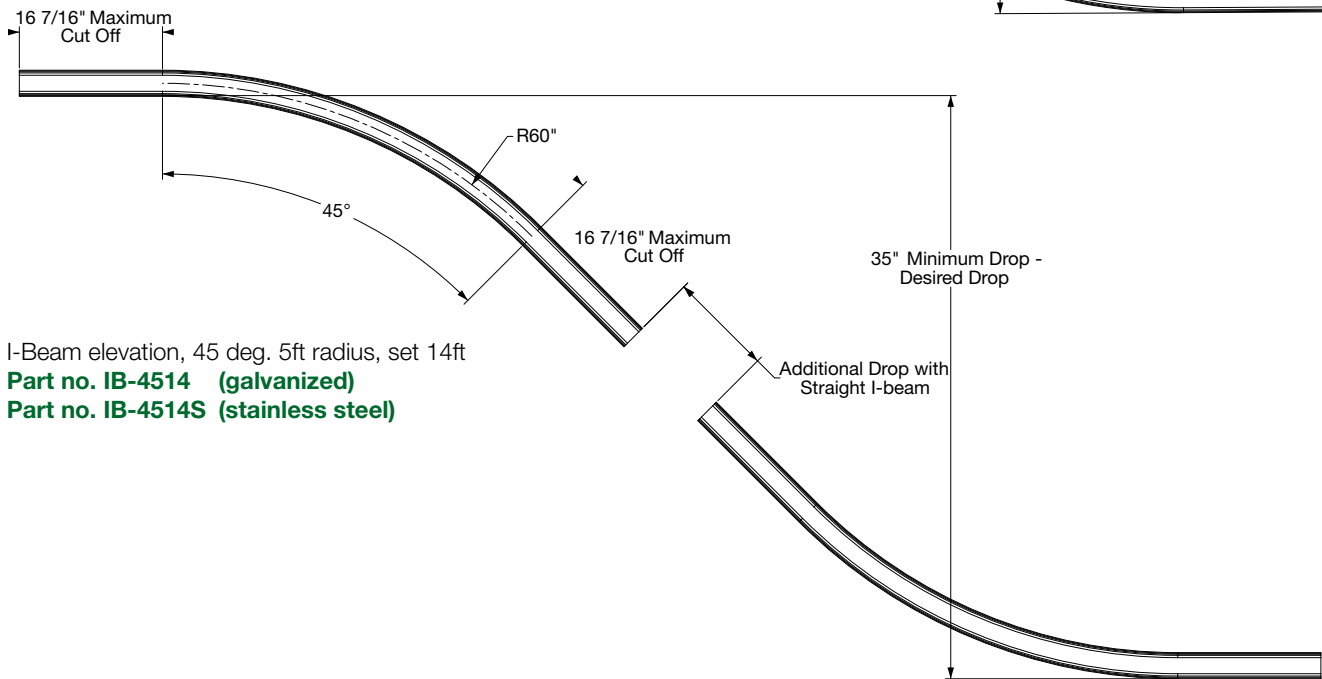
Elevations and straight 3" I-beam (galvanized and stainless steel)



I-Beam elevation, 30 deg. 5ft radius, set 14ft

Part no. IB-3014 (galvanized)

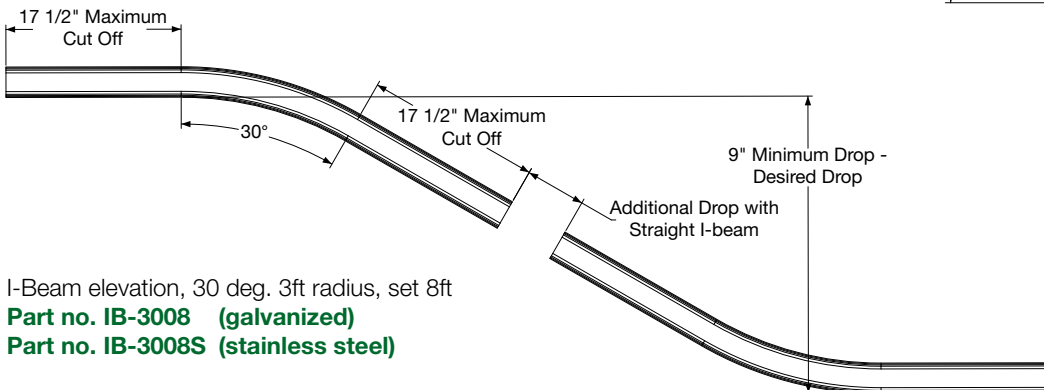
Part no. IB-3014S (stainless steel)



I-Beam elevation, 45 deg. 5ft radius, set 14ft

Part no. IB-4514 (galvanized)

Part no. IB-4514S (stainless steel)

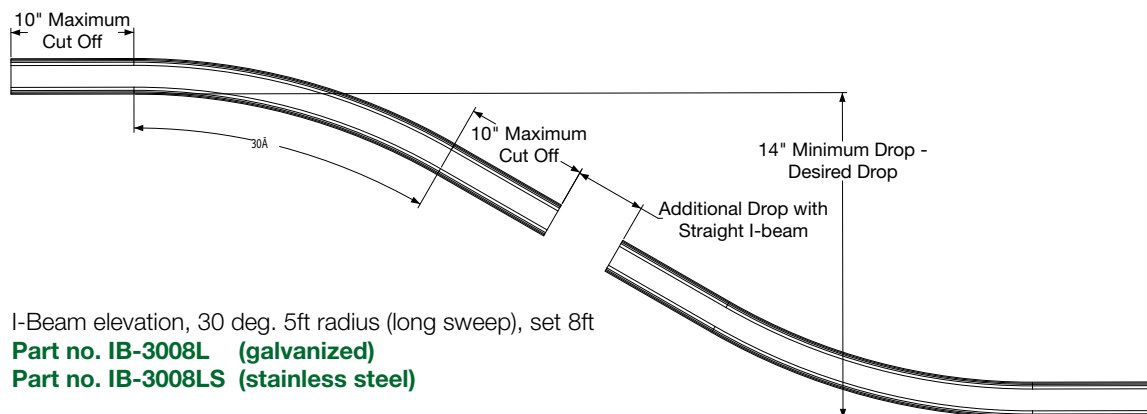


I-Beam elevation, 30 deg. 3ft radius, set 8ft

Part no. IB-3008 (galvanized)

Part no. IB-3008S (stainless steel)

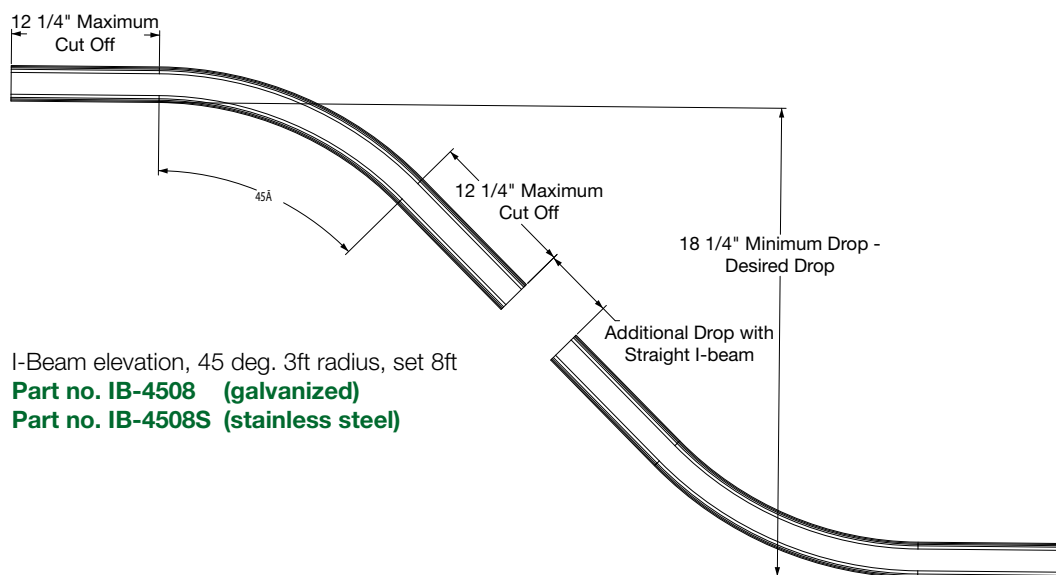
Elevations and straight 3" I-beam (galvanized and stainless steel)



I-Beam elevation, 30 deg. 5ft radius (long sweep), set 8ft

Part no. IB-3008L (galvanized)

Part no. IB-3008LS (stainless steel)



I-Beam elevation, 45 deg. 3ft radius, set 8ft

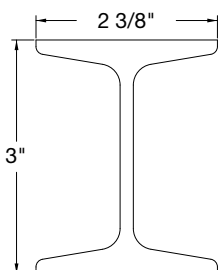
Part no. IB-4508 (galvanized)

Part no. IB-4508S (stainless steel)

3" I-Beam

Part no. IB-32375 (galvanized)

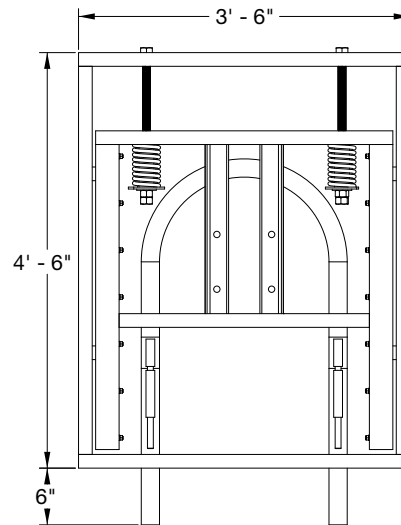
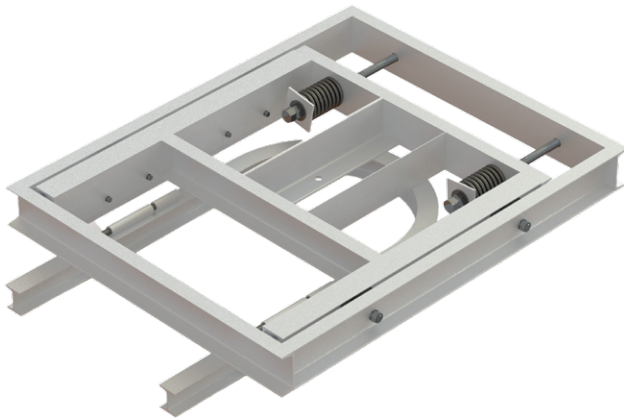
Part no. IB-32375S (stainless steel)



Elevations and straight 3" I-beam (galvanized)

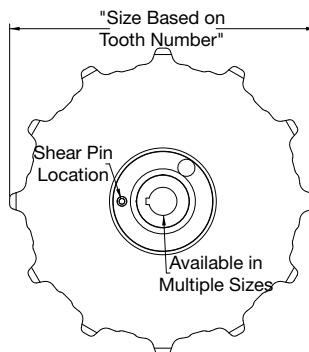
	Part no.	Plating	Elevation	Radius	Lenght total
3" I-Beam	IB-32375	galvanized	-	-	-
	IB-32375S	stainless steel	-	-	-
Elevations 14 ft long (set)	IB-3014	galvanized	30°	5 ft	14 ft
	IB-3014S	galvanized	30°	5 ft	14 ft
	IB-4514	stainless steel	45°	5 ft	14 ft
	IB-4514S	galvanized	45°	5 ft	14 ft
	IB-6014S	stainless steel	60°	5 ft	14 ft
Elevations 8 ft long (set)	IB-3008	galvanized	30°	-	8 ft
	IB-3008S	stainless steel	30°	-	8 ft
	IB-3008L	galvanized	30° Long-Sweep	-	8 ft
	IB-3008LS	stainless steel	30° Long-Sweep	-	8 ft
	IB-4508	galvanized	45°	-	8 ft
	IB-4508S	stainless steel	45°	-	8 ft

Spring-loaded automatic takeup

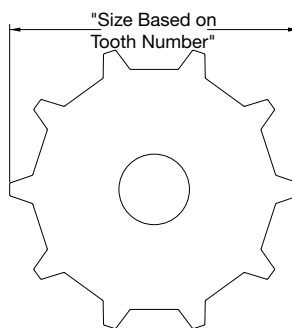


Sprockets and parts

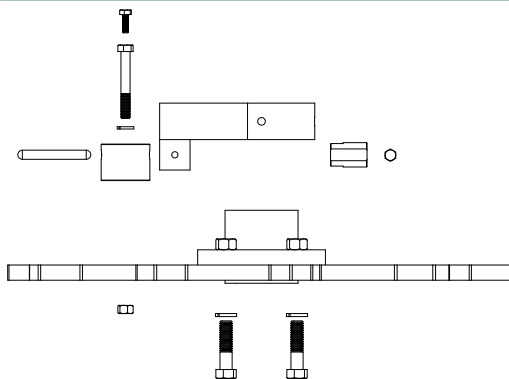
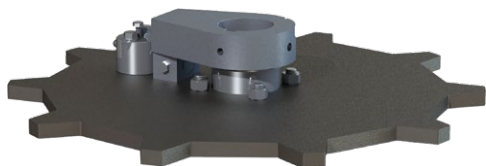
GL-Shear pin sprocket



Taperlock bushing sprocket



COV-Shear pin sprocket



	Part no.	Part
ICBG Shear Pin Sprockets	IB-11154	GL-Shear pin sprocket 10-Tooth for 50 DVX
	IB-11162	GL-Shear pin sprocket 10-Tooth for 60 DVX
	IB-12154	GL-Shear pin sprocket 12-Tooth for 50 DVX
	IB-12162	GL-Shear pin sprocket 12-Tooth for 60 DVX
	41109	40 DVX shear pin for GL sprocket
	41110	50 DVX shear pin for GL sprocket
	41111	60 DVX shear pin for GL sprocket
Taperlock sprockets	1110	10 tooth sprocket for taperlock bushing
	1112	10 wide tooth sprocket for taperlock bushing
	1120	12 tooth sprocket for taperlock bushing
	1117-16	Weld-In hub for taperlock bushing
	TB(XX)	(specify taperlock bushing size)

	Part no.	Part
COV-Shear pin sprocket	IB-21100	10 tooth sprocket with 4 mounting holes for shear pin assembly
	IB-2110001	10 wide tooth sprocket with 4 mounting holes for shear pin assembly
	IB-2210002	12 tooth sprocket with 4 mounting holes for shear pin assembly
	1150	50 DVX sprocket hub (2 3/16" output shaft)
	1160	60 DVX sprocket hub (2 7/16" output shaft)
	1250	50 DVX drive arm (2 3/16 output shaft)
	1260	60 DVX drive arm (2 7/16 output shaft)

Drive frames (made based on drive specification)

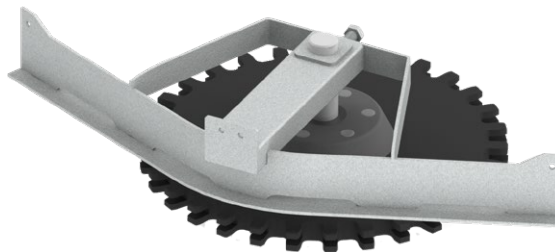
Part no.		
DRIVES 19"	410011	ICBG 50 DVX 90° frame, 10-tooth
	4100111	ICBG 19" Ø X 90° X 40/50 DVX RH
	410012	ICBG 60 DVX 90° frame -- galvanized -- 10-tooth LH
	410013	ICBG 60 DVX 90° frame -- galvanized -- 10-tooth RH
	410014	ICBG 50 DVX 180° frame -- galvanized -- 10-tooth
DRIVES 24"	410021	ICBG 50 DVX 90° frame -- galvanized -- 12-tooth LH
	410024	ICBG 50 DVX 180° frame -- galvanized -- 12-tooth
	410022	ICBG 60 DVX 90° frame -- galvanized -- 12-tooth LH
	410023	ICBG 60 DVX 90° frame -- galvanized -- 12-tooth RH
	410025	ICBG 60 DVX 180° frame -- galvanized -- 12-tooth
COV DRIVE PARTS	1250	50 DVX drive arm
	1260	60 DVX drive arm
	1550	50 DVX block
	1560	60 DVX block
	1450	50 DVX insert
	1460	60 DVX insert
	1150	50 DVX sprocket hub
	1160	60 DVX sprocket hub

Stainless steel T-rail turn

including 2" spacing idler wheel and synthetic corrosion resistant bearing assembly

Part no.

TR-1245SE	T-Rail turn complete 12" x 45 deg.
TR-1545SE	T-Rail turn complete 15" x 45 deg.
TR-1945SE	T-Rail turn complete 19" x 45 deg.
TR-2445SE	T-Rail turn complete 24" x 45 deg.



TR-1290SE	T-Rail turn complete 12" x 90 deg.
TR-1590SE	T-Rail turn complete 15" x 90 deg.
TR-1990SE	T-Rail turn complete 19" x 90 deg.
TR-2490SE	T-Rail turn complete 24" x 90 deg.



TR-12180SE	T-Rail turn complete 12" x 180 deg.
TR-15180SE	T-Rail turn complete 15" x 180 deg.
TR-19180SE	T-Rail turn complete 19" x 180 deg.
TR-24180SE	T-Rail turn complete 24" x 180 deg.



Replacement wheels

including bearing assembly and shaft

Part no.

TR-11CE	wheel bearing assembly for 11" turn
TR-14CE	wheel bearing assembly for 14" turn
TR-18CE	wheel bearing assembly for 18" turn
TR-23CE	wheel bearing assembly for 23" turn



Stainless steel complete T-rail takeups spring-loaded

Part no.

TR-19180TSE	T-rail Take-Up 19" x 180 deg., spring loaded (wheel included)
--------------------	---



Stainless steel elevations – ups and downs

Part no.

TR-30FS Elevation 30 deg. Up-Part
TR-30ES Elevation 30 deg. Down-Part



Up



Down

TR-45FS Elevation 45 deg. Up-Part
TR-45ES Elevation 45 deg. Down-Part

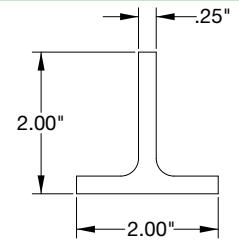


Up



Down

TR-001S T-Rail straight sections 20 feet sticks, stainless steel

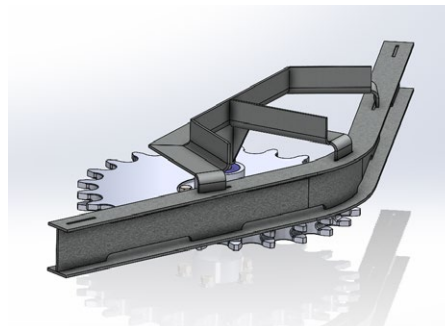


Stainless steel flex-line turns

Part no.

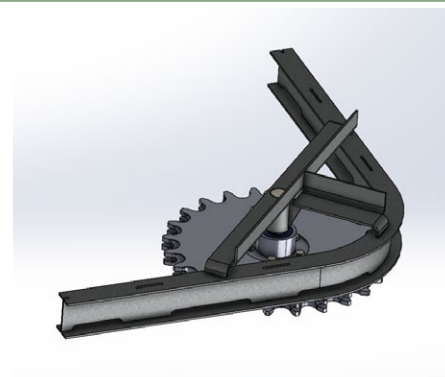
FL-19452 Flex-line turn complete 19" x 45 deg.

FL-24452 Flex-line turn complete 24" x 45 deg.



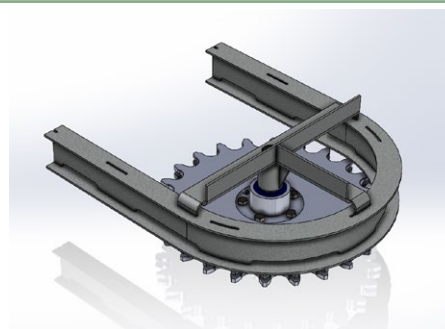
FL-19902 Flex-line turn complete 19" x 90 deg.

FL-24902 Flex-line turn complete 24" x 90 deg.



FL-191802 Flex-line turn complete 19" x 180 deg.

FL-241802 Flex-line turn complete 24" x 180 deg.

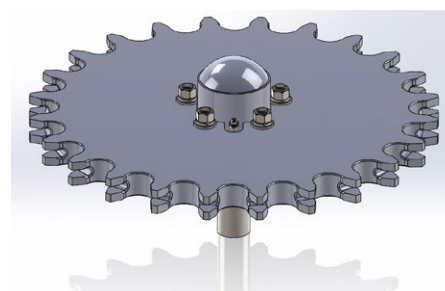


Replacement wheel assemblies

Part no.

FL-19C Flex-line turn wheel assembly 19" , 2" spacing

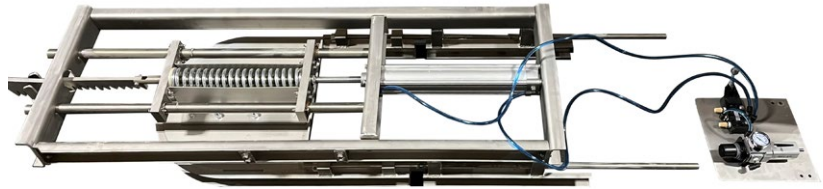
FL-24C Flex-line turn wheel assembly 24" , 2" spacing



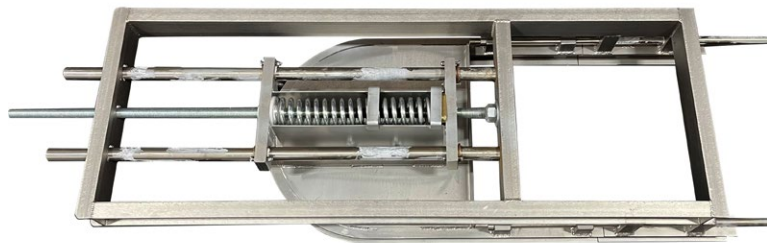
Stainless steel flex-line takeups

Part no.

FL-191802TP Flex-line pneumatic take-up complete
19" x 180 deg.



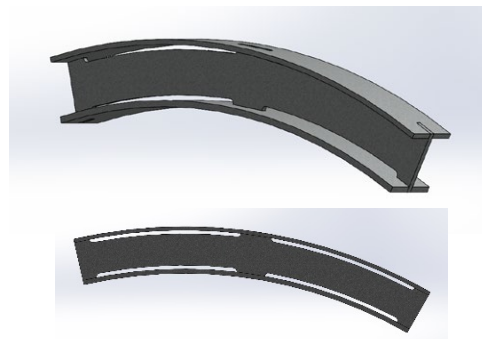
FL-191802TS Flex-line spring loaded take-up complete
19" x 180 deg.



Stainless steel flex-line elevations and straight track

Part no.

FL-30 Flex-line elevation, 30 deg. – set of two



FL-001S Flex-line straight track, 10 ft section



Baader Johnson replacement shackles

Samples:

Shackle rotating



Shackle Fixed



Shackle clip grey



J-hook



See list for entire assortment

Tarheel	Description	OEM
CP-256	22" Shackle Only	346300285-GY
CP-629	23-3/4" Shackle - Blue – Fixed	346300300-Blue
CP-628	23-3/4" Shackle - Green – Fixed	346300300-Green
CP-360	23-3/4" Shackle - Grey – Fixed	346300300-GY
CP-630	23-3/4" Shackle - Red – Fixed	346300300-Red
CP-136 Blue	23-3/4" Shackle - Blue – Rotating	346300301-B
CP-136 Green	23-3/4" Shackle - Green – Rotating	346300301-GRN
CP-136	23-3/4" Shackle - Grey – Rotating	346300301-GY
CP-136 Yellow	23-3/4" Shackle - Yellow – Rotating	346300301-Y
CP-473	24-1/2" Shackle - Grey – Fixed	346300310GY
CP-1187	24-1/2" Shackle - Brown – Fixed	346300310BN
CP-914	24-1/2" Shackle - Blue – Fixed	346300310B
CP-913	24-1/2" Shackle - Green – Fixed	346300310GN
CP-2150	24-1/2" Shackle - Red – Fixed	346300310R
CP-231	24-1/2" Shackle - Grey – Rotating	346300311G4N
CP-231 BLUE	24-1/2" Shackle - Blue – Rotating	346300311G4N-BLUE
CP-231 GREEN	24-1/2" Shackle - Green – Rotating	346300311G4N-GRN
CP-231 YELLOW	24-1/2" Shackle - Yellow – Rotating	346300311G4N-YEL
CP-231 LIGHT GREY	24-1/2" Shackle - Light Grey – Rotating	346300311G4N-LG
CP-231 RED	24-1/2" Shackle - Red – Rotating	346300311G4N-RED
CP-387	24-1/2" Shackle with Swivel Hook – Blue	346300311-BLUE
CP-386	24-1/2" Shackle with Swivel Hook - Green	346300311-GRN
CP-300	24-1/2" Shackle with Swivel Hook - Grey	346300311-GY
CP-335	25-1/2" Shackle - Grey – Fixed	346300320-GY
CP-335-BK	25-1/2" Shackle - Black – Fixed	346300320-BLACK

Baader Johnson replacement shackles

Tarheel	Description	OEM
CP-335-B	25-1/2" Shackle - Blue – Fixed	346300320-Blue
CP-335-R	25-1/2" Shackle - Red – Fixed	346300320-Red
CP-333	27-3/4" Shackle - Grey – Fixed	3463003406Y
CP-250 BLUE	24-1/2" Shackle with Stainless Steel Hook - Blue	
CP-250 GRN	24-1/2" Shackle with Stainless Steel Hook - Green	
CP-250 GRY	24-1/2" Shackle with Stainless Steel Hook - Grey	
CP-250 YELLOW	24-1/2" Shackle with Stainless Steel Hook - Yellow	
CP-2067	22" Shackle - Grey - Fixed – Rotating	
CP-2067-O	22" Shackle - Orange - Fixed – Rotating	
CP-2067-R	22" Shackle - Red - Fixed – Rotating	
CP-2067-B	22" Shackle - Blue - Fixed – Rotating	
CP-257	22" Shackle with Swivel Hook – Grey	
CP-257-Blue	22" Shackle with Swivel Hook - Blue	
CP-257-Orange	22" Shackle with Swivel Hook – Orange	
CP-257-Red	22" Shackle with Swivel Hook - Red	
CP-2725BLU	24-3/4" Shackle - Blue - Rotating	
CP-2725GRN	24-3/4" Shackle - Green - Rotating	
CP-2725GRY	24-3/4" Shackle - Grey - Rotating	
CP-2725RED	24-3/4" Shackle - Red - Rotating	
CP-2776Gry	24-3/4" Shackle - Grey - Fixed	
CP-2776BLU	24-3/4" Shackle - Blue - Fixed	
CP-2776GRN	24-3/4" Shackle - Green - Fixed	
CP-2776RED	24-3/4" Shackle - Red - Fixed	
CP-339	22-1/8" Shackle - Grey	
CP-340	22-1/8" Shackle - Blue	
CP-341	22-1/8" Shackle - Green	
CP-342	22-1/8" Shackle -Yellow	
CP-605	29-1/8" Shackle - Grey	
CP-688	26-1/2" Shackle - Grey	

Dapec replacement shackles

Samples:

Flex-line non-weigh PG shackle complete with CP-867 shackle larger loop



Flex-line shackle small bird



Flex-line weigh shackle small bird



Food service shackle modified new modification



Plastic bushing with washer



See list for entire assortment

Tarheel	Description	OEM
CP-452	Flex-line Weigh Small Bird Long Tail Shackle Assembly	
CP-627	Flex-line Weigh or Non-weigh Small Bird Shackle Assembly - Upper Part with 4 mm Connecting PC	
CP-631	Flex-line Weigh Small Bird Short Tail Shackle Assembly	
CP-637	Flex-line Weigh or Non-weigh Small Bird and Big Bird Non-weigh Shackle Assembly Upper Part with 8 mm Connecting PC	
CP-867	Flex-line Non-weigh PG Shackle Larger Loop	
CP-868	Flex-line Non-weigh PG Shackle Complete with CP-867 Shackle Larger loop	
CP-215-8MM	Flex-line Non-weigh Shackle Complete for Small Bird 8MM Connecting Piece	09.03.028.000-8MM
CP-436	Pollo Line Shackle with Long Tail Black Block And SS Knob	1044x345
CP-389	Flex-line Non-weigh Shackle Complete for Big Bird	19.70.064.800
CP-453	Compact Shackle with Small Shaft for Big bird	75.99.501.000
CP-384	Flex-line Weigh Shackle Long Tail 8"	79.00.000.000
CP-380	Flex-line Non-weigh Small Bird	79.00.000.500
CP-298	Flex-line Weigh Big Bird Shackle 7" Center 9" Length	79.00.005.500
CP-454	Compact Shackle Heavy Shaft For Big Bird	79.00.006.600
CP-229	Flex-line Non-weigh Big Bird Shackle	79.00.008.500
CP-297	Compact Shackle SHORT 11" length 5" Center	79.00.009.500
CP-297M	Compact Shackle SHORT 11" length 5" Center	79.00.009.500M
CP-237	Flex-line Weigh 8" Center Shackle	79.00.014.200
CP-369	Flex-line Weigh, Non-weigh Connecting Piece 4 mm	79.00.014.300
CP-180	Food Service Shackle	79.00.015.700
CP-180M	Food Service Shackle Modified	79.00.015.700M
CP-180M-N	Food Service Shackle Modified New Modification	79.00.015.700M-N
CP-180M-TAB	Food Service Shackle Modified with Tabs	79.00.015.700M-TAB
CP-1967	Food Service Shackle Modified with 10 mm Hock Opening	
CP-1967M-N	Food Service Shackle New Modified with 10 mm Hock Opening	
CP-903	Flex-line Weigh Flexline Shackle with Curved base	79.00.023.100
CP-2263	Foodservice, Compact Flex Line Shackle Big Bird 7" Center 9" Length Big Loop	

Marel replacement shackles

Samples:

Evisceration shackle – grey big bird 13 mm



Evisceration shackle – grey small bird 10 mm



Evisceration shackle – grey small bird 13 mm



Stork distribution shackle



See list for entire assortment

Tarheel	Description	OEM
CP-2175G	Evisceration Shackle – Grey Small Bird 10 mm	3843791
CP-2175R	Evisceration Shackle – Red Small Bird 10 mm	3887192
CP-2175B	Evisceration Shackle – Blue Small Bird 10 mm	3887193
CP-2175O	Evisceration Shackle – Orange Small Bird 10 mm	
CP-1095	Evisceration Shackle – Grey Small Bird 13 mm	3887196
CP-1206	Evisceration Shackle – Red Small Bird 13 mm	3887197
CP-1207	Evisceration Shackle – Blue Small Bird 13 mm	3887198
CP-996	Evisceration Shackle – Orange Small Bird 13 mm	3887200
CP-2559	Evisceration Shackle – Black Small Bird 13 mm	
CP-2112G	Evisceration Shackle – Grey Big Bird 13 mm	4069975-NM
CP-2112R	Evisceration Shackle – Red Big Bird 13 mm	4069976-NM
CP-2112B	Evisceration Shackle – Blue Big Bird 13 mm	4069977-NM
CP-2112O	Evisceration Shackle – Orange Big Bird 13 mm	4069978-NM
CP-004	Cut-Up Flex Line Shackle Broiler Small	3915779
CP-004L	Cut-Up Flex Line Shackle Roaster Large	3915780
CP-138	Turning Pack Shackle Complete with Black Pin	3939116
CP-141	Turning Pack Shackle Complete with White Pin	3939116
CP-140	Turning Pack Shackle Complete with Red Pin	3939116
CP-139	Turning Pack Shackle Complete with Blue Pin	3939116
CP-390	Stationary Pack Shackle	5004201
CP-2143	Distribution Shackle Orange	646302-O
CP-2144	Distribution Shackle Blue	646302-B
CP-2188	Distribution Shackle Black	646302-BK
CP-268	Modified Shackle With Small Hole	
CP-269	Modified Shackle With Large Hole	3982007
CP-1112	NT Shackle Complete Small Bird	3972900
CP-973	NT Shackle Complete Large Bird	3981984

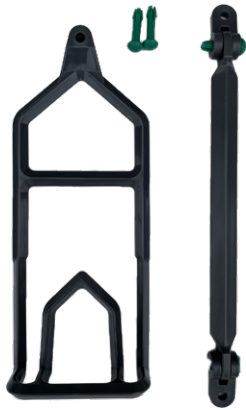
Meyn replacement shackles

Samples:

Evisceration shackle - 12 mm - grey



Evisceration shackle complete - 12 mm - grey



Evisceration shackle - 8 in - grey



Evisceration shackle complete - 8 in - grey



Big bird cut-up shackle complete



See list for entire assortment

Tarheel	Description	OEM
CP-224	Evisceration Shackle - 12 mm - Grey	0990H02000018-H
CP-550	Evisceration Shackle - 12 mm - Green	0990H02000041
CP-736	Evisceration Shackle - 12 mm - Blue	0990H02000063
CP-939	Evisceration Shackle - 12 mm - Red	
CP-1482	Evisceration Shackle - 14 mm - Grey	0990H02000029
CP-1681	Evisceration Shackle - 14 mm - Red	
CP-1682	Evisceration Shackle - 14 mm - Blue	
CP-1683	Evisceration Shackle - 14 mm - Green	
CP-227	Evisceration Shackle Complete - 12 mm - Grey	0990H02000036
CP-227 BLUE	Evisceration Shackle Complete - 12 mm - Blue	
CP-227 GREEN	Evisceration Shackle Complete - 12 mm - Green	
CP-227 Red	Evisceration Shackle Complete - 12 mm - Red	
CP-420	Evisceration Shackle Complete - 8 in - Grey	0990H02000079
CP-421	Evisceration Shackle - 8 in - Grey	0990H02000066
CP-421B	Evisceration Shackle - 8 in - Blue	0990H02000066-B
CP-421R	Evisceration Shackle - 8 in - Red	0990H02000066-R
CP-421Y	Evisceration Shackle - 8 in - Yellow	0990H02000066-Y
CP-421G	Evisceration Shackle - 8 in - Green	0990H02000066-G
CP-429	Evisceration Shackle Complete - 10 mm - Grey	0990H02000073
CP-385	Evisceration Shackle - 10 mm - Grey	0990H02000050
CP-738	Evisceration Shackle - 10 mm - Blue	
CP-737	Evisceration Shackle - 10 mm - Green	
CP-2851	Evisceration Shackle - 10 mm - Red	
CP-1402	Evisceration Shackle - 8 in with 12 mm Hook opening - Grey	

Meyn replacement shackles

Samples:

Suspension rod for shackle



Shackle pin



Plastic break-away



Hinge only for shackle



See list for entire assortment

Tarheel	Description	OEM
CP-2702	Cut up Shackle - 13 mm - Green	0990H04000180
CP-2739	Cut up Shackle - 13 mm - Grey	
CP-2887	Cut up Shackle Complete Shackle without Hanger	0990H040F003
CP-2895	Cut up Complete Big Bird Shackle 15 mm Hanger	0990H040F003-B
CP-2894	Cut up Complete Small Bird Shackle 13 mm Hanger	0990H040F003-S
CP-2898	Rotary Shackle Complete	0871.0003.000.01
CP-2847	Flexplus Shackle	0990H040F0500



888.774.7307 • greenlineconveyor.com

For latest releases, newest features and downloads of catalogs, software, or CAD drawings, visit our website at greenlineconveyor.com. We reserve the right to make technical changes. We take no responsibility for errors, but welcome comments. Reproduction of catalog contents, in whole or in part, is prohibited. The validity of all previous editions has expired.

GREENLINE

5808 Long Creek Park Drive – Suite Q

Charlotte, NC 28269 USA

Tel.: 704-333-3377

Fax: 704-334-6146

info@greenlineconveyor.com

[**greenlineconveyor.com**](http://greenlineconveyor.com)

Distribution



GREENLINE
PREMIUM QUALITY PRODUCTS AND SERVICES

888.774.7307 • greenlineconveyor.com